

West Seattle and Ballard Link Extensions

*West Seattle/Duwamish
Community Advisory Group
4/12/2022*



Agenda

- Welcome and review CAG progress
- Begin to identify issues, tradeoffs of Draft EIS alternatives
- City of Seattle: Draft EIS Review
- Potential cost savings and refinements ideas
- Next steps and next meeting

Why we're here today

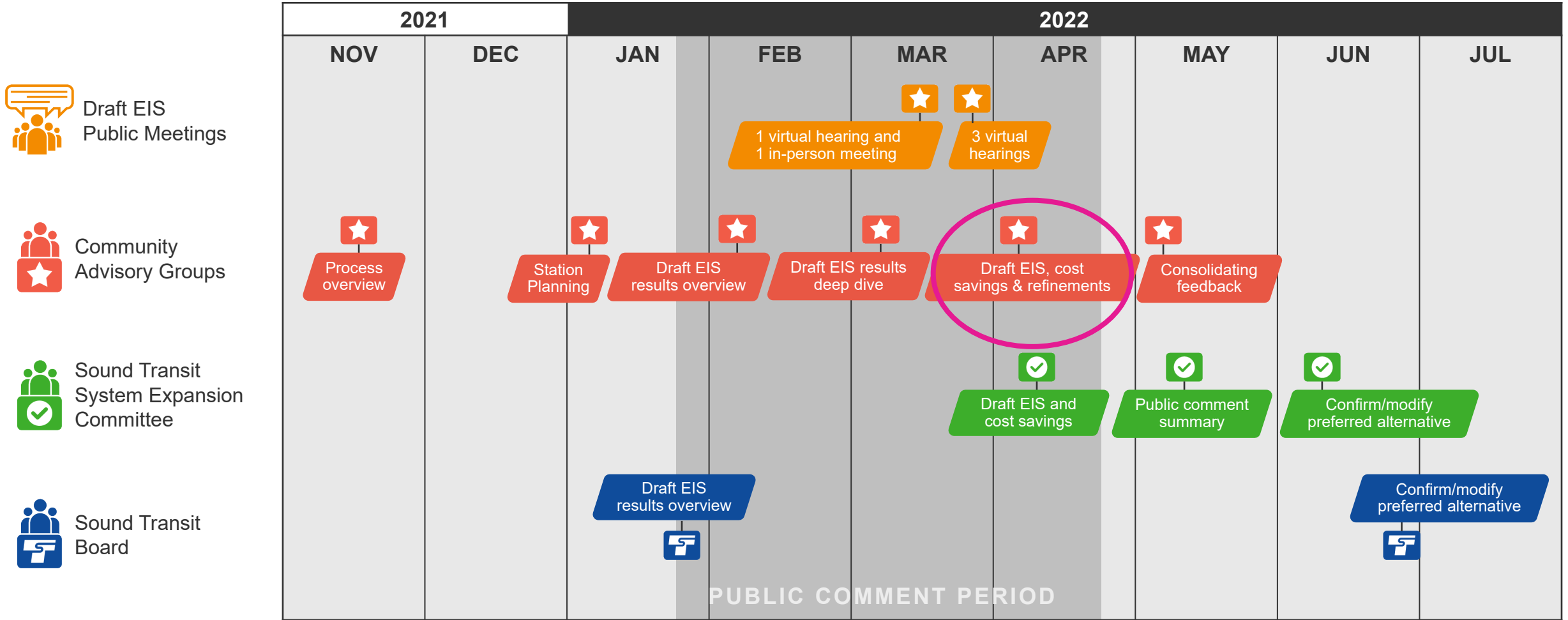
- Engage with fellow CAG members in small groups to begin to identify issues and tradeoffs of Draft EIS alternatives
- Preview draft City of Seattle comments on the Draft EIS
- Learn about the potential cost savings and refinement concepts that Sound Transit has been exploring

Agenda

- *Welcome and review CAG progress*
- Begin to identify issues, tradeoffs of Draft EIS alternatives
- City of Seattle: Draft EIS Review
- Potential cost savings and refinements ideas
- Next steps and next meeting

Community engagement and collaboration

Draft Environmental Impact Statement (EIS)



November CAG

Process Overview

- Introduction to **project timeline, environmental review, and alternatives**
- Overview of **CAG timeline and expectations**

January CAG

Station Planning

- Presentation of **co-planning partnership and roles** between Sound Transit and City of Seattle and **Racial Equity Toolkit (RET) outcomes**
- Presentation and discussion on **station planning** for the West Seattle segments

February CAG

Draft EIS results overview

- Presentation and discussion of **Draft EIS findings** for the West Seattle segments
- Introduction to the **City's role in engaging in the Draft EIS process**

March CAG

Draft EIS results deep dive

- Presentation and discussion of **Draft EIS deep dive topics** based on CAG feedback in February
- Presentation and discussion of **City review of the Draft EIS and potential tradeoffs**

April CAG

Draft EIS, cost savings and refinements

- Breakout group discussions to identify and discuss **key tradeoffs** between alternatives
- Preview of draft City comments on the Draft EIS
- Staff presentation on potential **cost saving and refinement ideas**

May CAG

Consolidating feedback

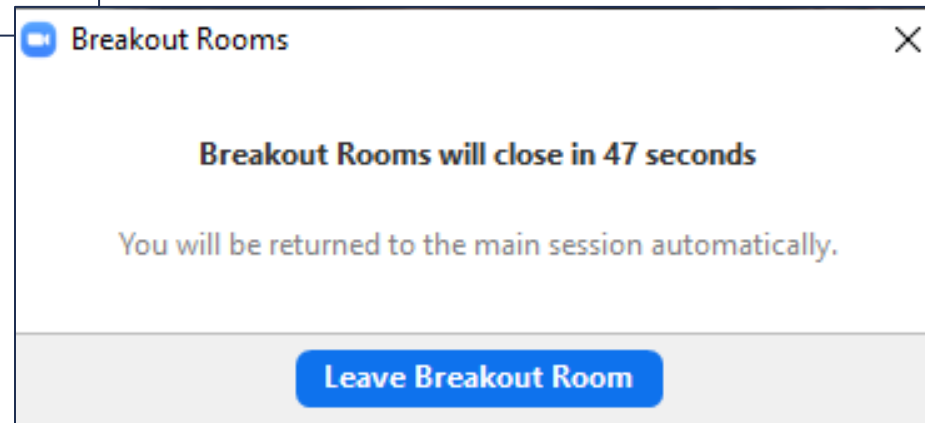
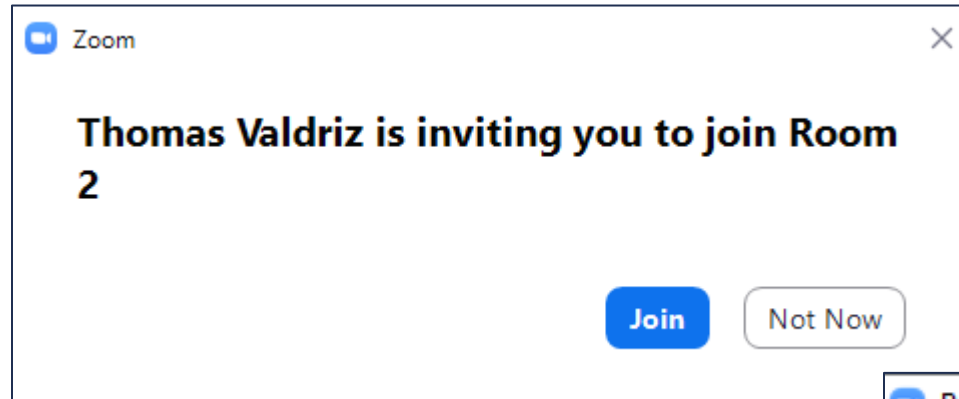
We will invite you to answer the following:

- What are your thoughts on **issues** and **tradeoffs** between the alternatives?
- What are your thoughts on a **preferred alternative**?
- What are your thoughts on the **cost saving and refinement ideas**?

Agenda

- Welcome and review CAG progress
- ***Begin to identify issues, tradeoffs of Draft EIS alternatives***
- City of Seattle: Draft EIS Review
- Potential cost savings and refinements ideas
- Next steps and next meeting

Small Group Discussions



Small Group Discussions

CAG members are currently participating in breakout groups and will return at 5:50pm to report out on their discussions.

Please stay tuned!

Report Back to Full Group

What issues and tradeoffs did your group begin to identify as you compare the Draft EIS alternatives?

Agenda

- Welcome and review CAG progress
- Begin to identify issues, tradeoffs of Draft EIS alternatives
- ***City of Seattle: Draft EIS Review***
- Potential cost savings and refinements ideas
- Next steps and next meeting



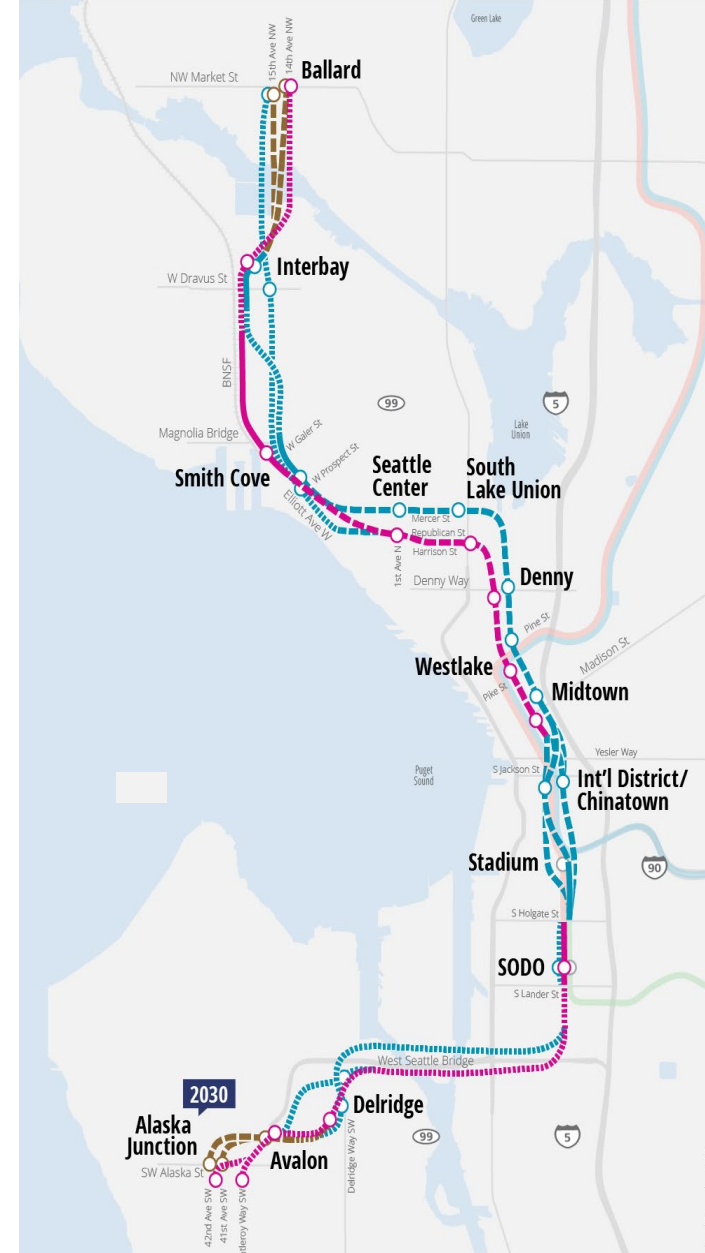
West Seattle and Ballard Link Extensions City of Seattle DEIS Review

West Seattle/Duwamish Community Advisory Group Meetings | April 2022

WSBLE DEIS + City Partnership

WSBLE is the **biggest infrastructure project** in our City's history—bringing both **transformative opportunity** and **significant impacts**.

The DEIS is a **critical early juncture** for the City to uphold our Partnering Agreement with Sound Transit “...to ensure that **environmental impacts and appropriate mitigation measures** are identified during the environmental review process...[and]...to work together to ensure that there are **no surprises later** in project permitting...”



Context for City Comments

The City is both a **reviewer** and **regulator**. Our aim is to:

- Help advance the best project to meet community and City interests.
- Facilitate the streamlined permitting and construction of the eventual project. ***Critiquing the DEIS now is normal and necessary to facilitate permitting and construction later.***

In April, the City is sharing **draft** comments with community members and stakeholders—we want your feedback to help shape the City DEIS comments and eventual position on a preferred alternative.

The City is a **committed partner** to Sound Transit to support WSBLE and will work collaboratively to resolve outstanding DEIS issues in the coming months.



City Scope of WSBLE DEIS Review

Review for compliance and adequacy:

1. Does the DEIS demonstrate compliance with City Codes/Director's Rules?
2. Does the DEIS adequately identify and evaluate project impacts and include appropriate mitigation?
3. Does the DEIS meaningfully compare alternatives?

Review for additional strategic questions for the City:

4. Does the DEIS adequately analyze impacts to BIPOC communities, propose mitigation, and further the joint Racial Equity Toolkit outcomes?
5. How does new DEIS information shape City position on alternatives?



1. Does the DEIS demonstrate compliance with City Codes/Director's Rules?

More analysis is needed to ensure compliance with:

- Guideway Impacts
 - Noise regulations related to elevated and at-grade guideway sections
 - City stormwater regulations
 - Height bulk and scale
 - Light, glare and shading; SEPA view corridors
- Visual and aesthetic impacts
 - SEPA view corridors and scenic routes
- Environmentally Critical Areas
 - Steep slopes, flood plain, peat settlement zone regulations
 - Great Blue Heron habitat
- City Low-Income Housing regulations

2. Does the DEIS adequately identify and evaluate project impacts and include appropriate mitigation?

More analysis is needed to fully assess impacts and propose mitigation for:

- Construction impacts to traffic and transit
- Residential displacements for all alternatives
- Business displacements particularly maritime businesses along the Duwamish
- Impacts to Fire Station 36 (access/possible relocation)
- Impacts to parks and natural areas
 - Duwamish Waterway (visual - height, bulk, scale, in-water work)
 - West Seattle Golf Course
 - Longfellow Creek (and trails system)
 - West Duwamish Greenway (tree removal, Great Blue Heron colony)

3. Does the DEIS meaningfully compare alternatives?

The DEIS does provide sufficient information to meaningfully compare alternatives in Duwamish and West Seattle segments, however...

For the Delridge segment alternatives, would like to see additional analysis using an expanded study area to capture impacts to communities of color who will access the station from further south.

The City is interested in refinements that would further Racial Equity Toolkit outcomes at Delridge station alternatives to optimize transit integration and provide opportunities for equitable TOD.

What do these comments mean?

The City is a **strong supporter of the WSBLE project** and intends to support eventual project permitting and construction. Between the Draft EIS and Final EIS, the City is committed to work with Sound Transit to ensure that the project:

- Complies with codes and regulations through additional analysis or modifications.
- Avoids/minimizes/mitigates impacts through modifications or a Mitigation Plan.

We look forward to working with Sound Transit on the additional analysis and mitigation flagged here and in our detailed comments.

The City Team will **continue our work with community** throughout this time. We aim to ensure that City decisions on WSBLE are centered in racial equity and co-created and truth-checked with community. City staff listen through a range of engagement opportunities: briefings, one-on-one conversations, letters, and workshops.



Next Steps

City DEIS Review Comments

- Continue internal staff review of DEIS.
- Share staff review comments at 4/19 City Council T+SPU Committee meeting and community meetings through April.
- Transmit comments to Sound Transit by 4/28.

City position on a Preferred Alternative

- Joint Council Resolution on WSBLE alternatives in May/June.
- Mayor Harrell and CP Juarez engage in Sound Transit Board discussions in June.





Additional questions please contact
Nicole Kistler, *Neighborhoods*
Nicole.Kistler@Seattle.gov

Agenda

- Welcome and review CAG progress
- Begin to identify issues, tradeoffs of Draft EIS alternatives
- City of Seattle: Draft EIS Review
- ***Potential cost savings and refinements ideas***
- Next steps and next meeting

Cost saving and refinement concepts

Context for looking at cost savings

- In response to steep rise in **real estate** and **construction** costs, Board adopted a realignment plan in August 2021

Realignment plan

- Board identified affordable program schedule, as well as **affordability gaps** to **target schedules**
 - WSBLE has an estimated project-level affordability gap of \$1.8B, based on current financial projections and cost estimates
 - Smith Cove to Ballard: Target delivery 2037; affordable delivery 2039
- Includes Board direction to intensively pursue additional financial capacity and identify **opportunities to reduce cost**

Work purpose and limitations

- Initial assessment of **feasibility** and **potential cost savings**
- Based on limited engineering design
- Would require **further study** of environmental, passenger experience and other implications

Concepts we'll discuss today

Cost savings

- Potentially help address **affordability gap**

Other refinements

- Potentially address **other risks or opportunities**

Desired feedback

- Seeking Board direction on **whether to study any of these ideas further**
- Not seeking Board direction to adopt these ideas now

Cost savings concepts

Concepts we'll discuss today

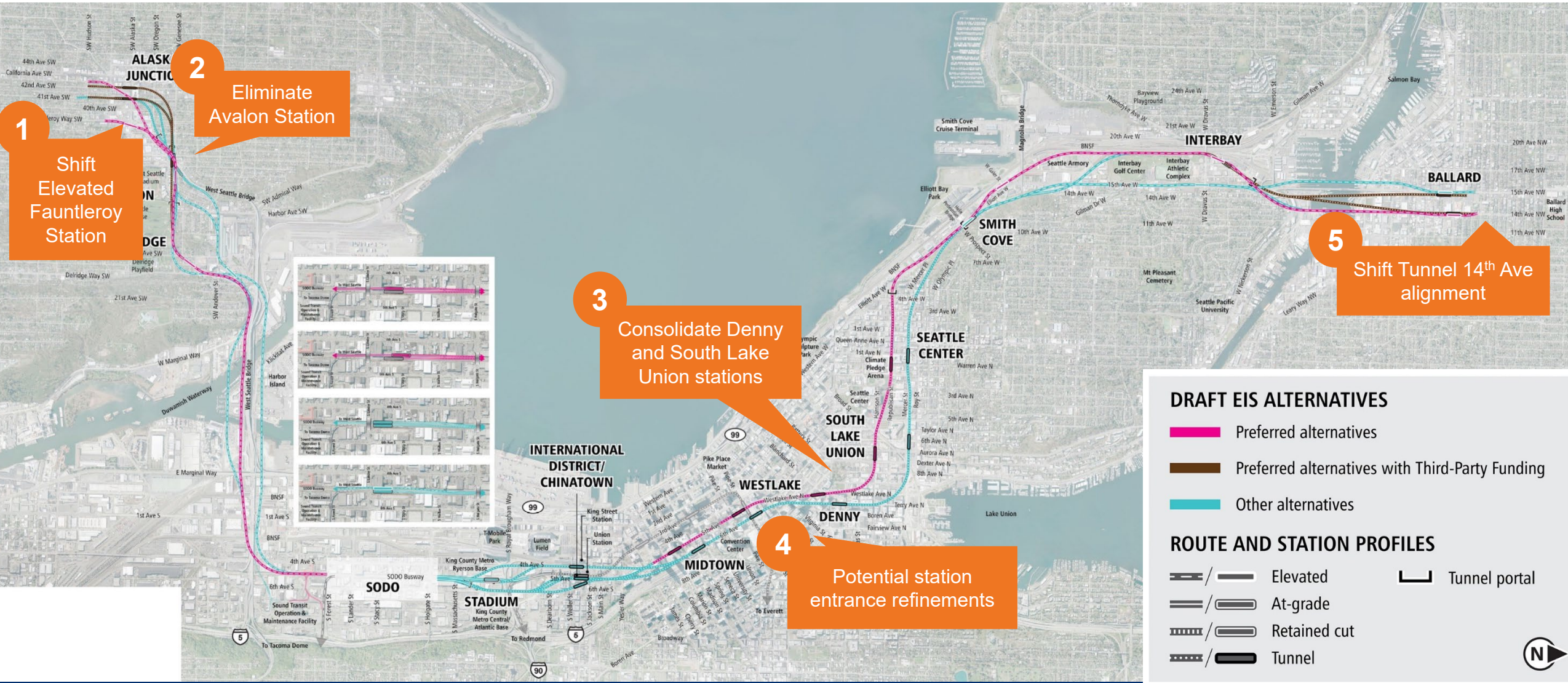
Cost savings

- Potentially help address **affordability gap**

Other refinements

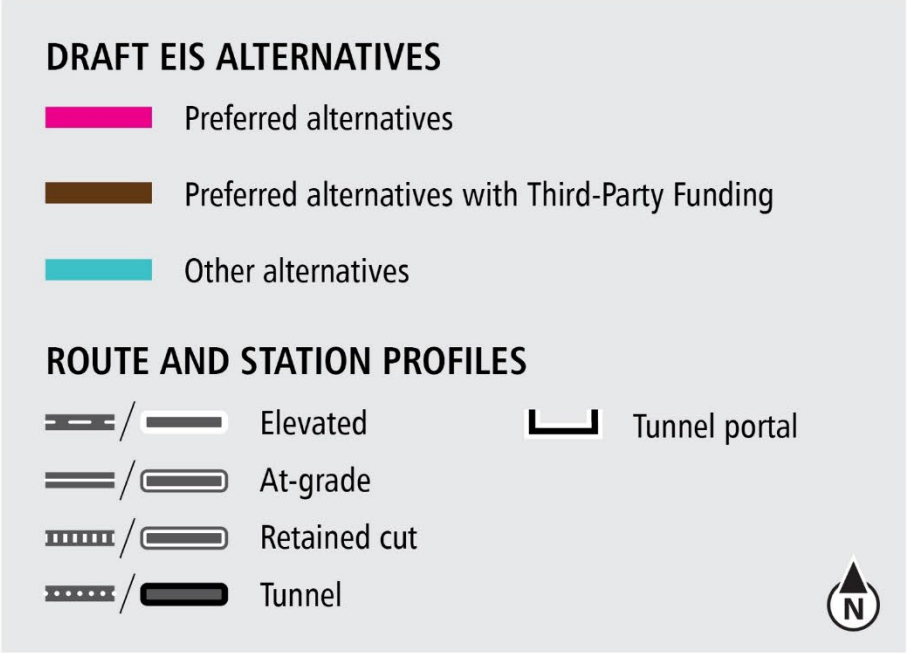
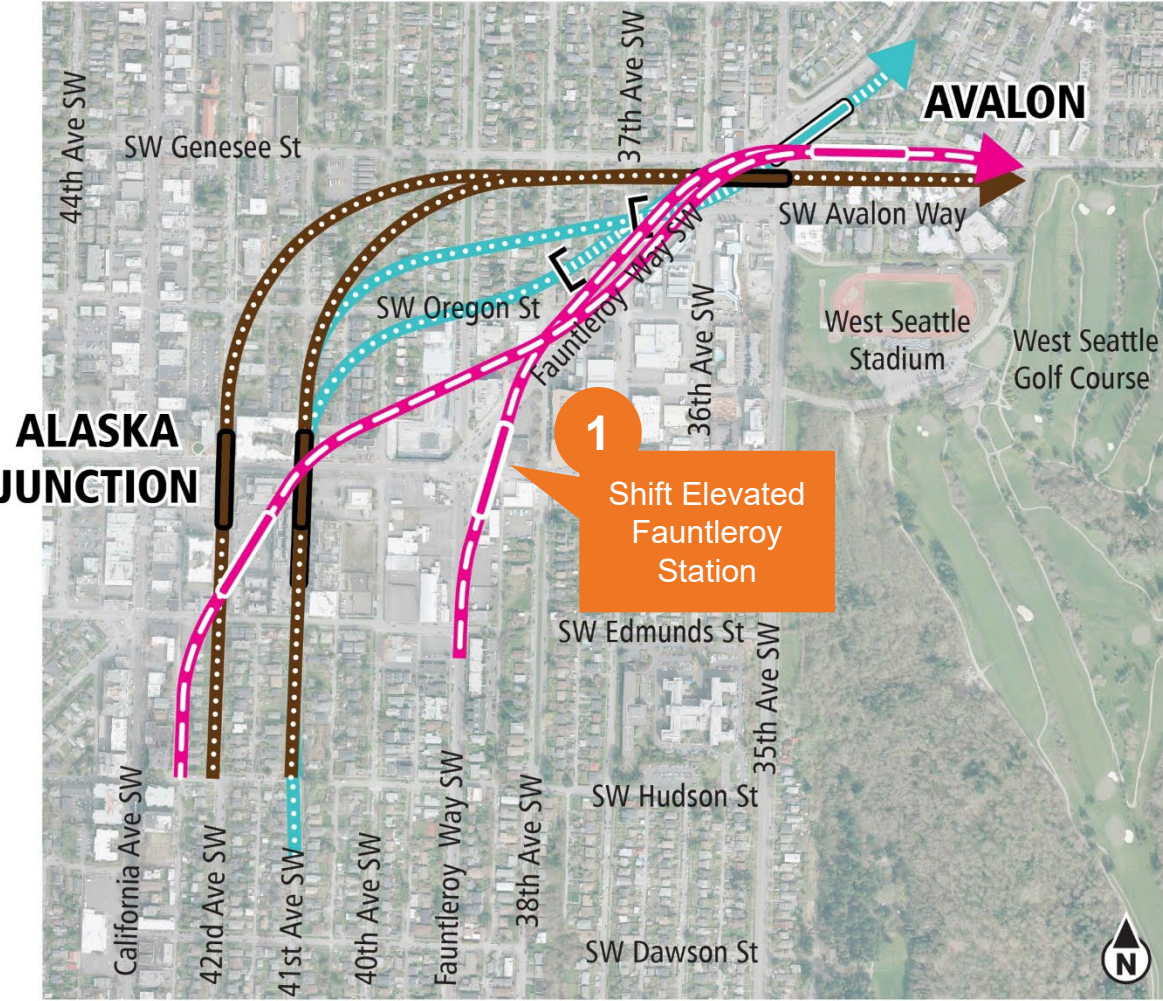
- Potentially address **other risks or opportunities**

Cost savings concepts summary



West Seattle Junction segment

Cost savings concepts West Seattle Junction



Diagrams are not to scale and all measurements are approximate for illustration purposes only.

1

Shift Elevated Fauntleroy Station



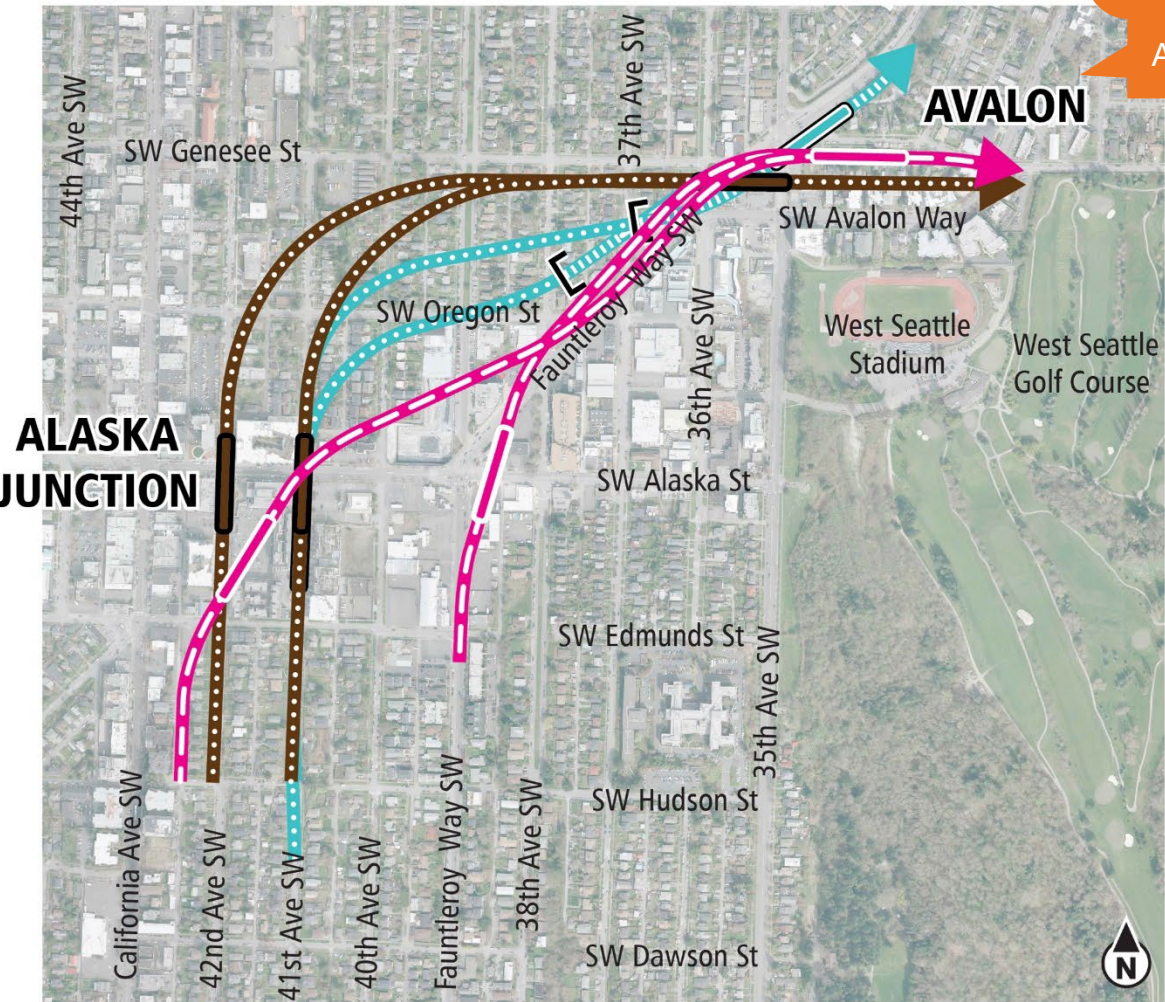
Cost savings: **-\$200M**

Estimates shown in 2019 dollars, based on conceptual design, and subject to change.

Cost savings concepts West Seattle Junction

2

Eliminate
Avalon Station



DRAFT EIS ALTERNATIVES

- Preferred alternatives
- Preferred alternatives with Third-Party Funding
- Other alternatives

ROUTE AND STATION PROFILES

- Elevated
- At-grade
- Retained cut
- Tunnel
- Tunnel portal



Diagrams are not to scale and all measurements are approximate for illustration purposes only.

2a

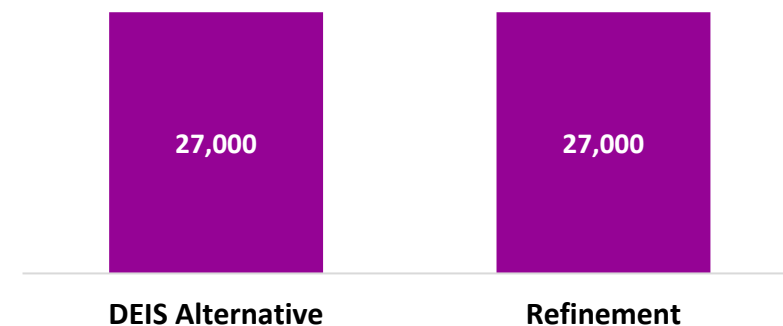
Eliminate Avalon Station (and shift Elevated Fauntleroy Station)



Cost savings: - \$325M*

***includes \$200M savings from shifting Elevated Fauntleroy Station**

Daily Trips on Project



Estimates shown in 2019 dollars, based on conceptual design, and subject to change.

2b

Eliminate Avalon Station (with Medium Tunnel 41st)



Cost savings: - \$60M

Daily Trips on Project



Estimates shown in 2019 dollars, based on conceptual design, and subject to change.

Other refinement concepts

Concepts we'll discuss today

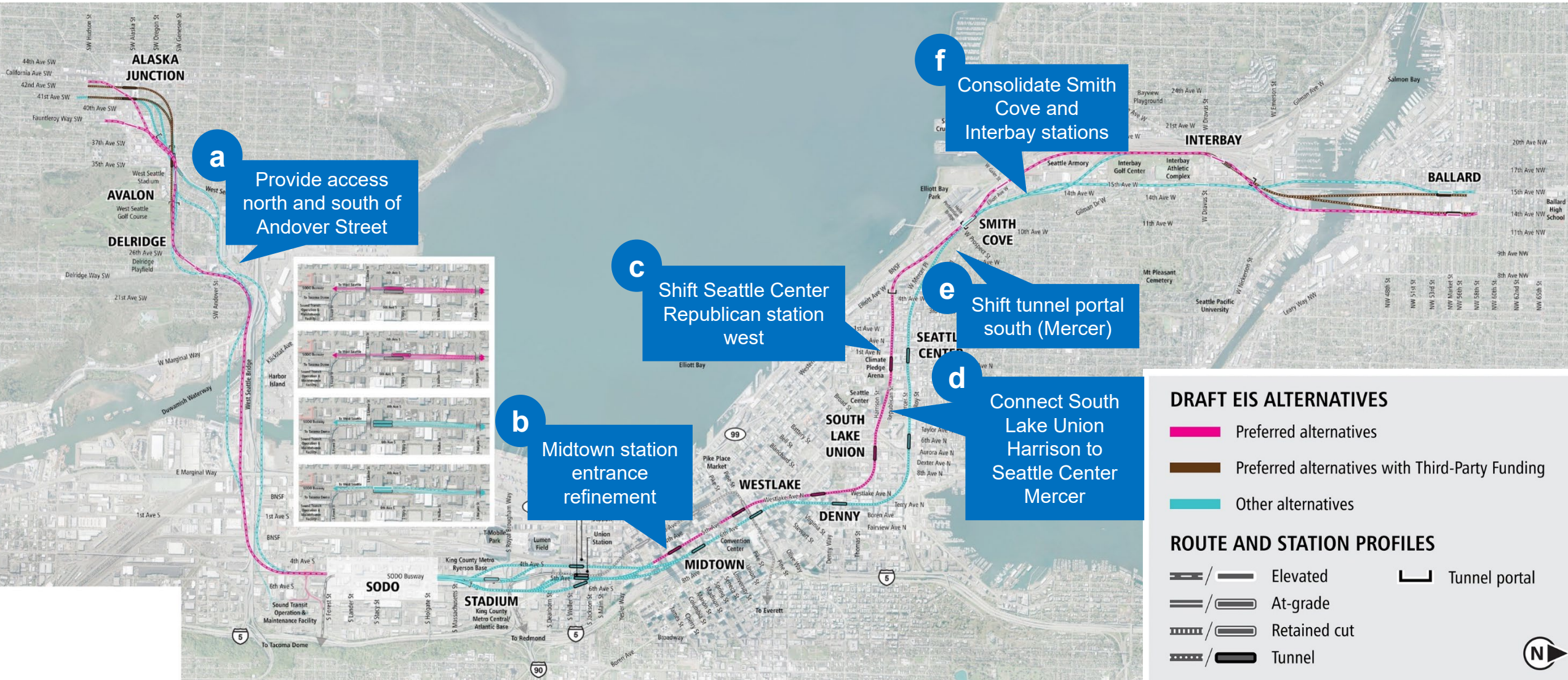
Cost savings

- Potentially help address **affordability gap**

Other refinements

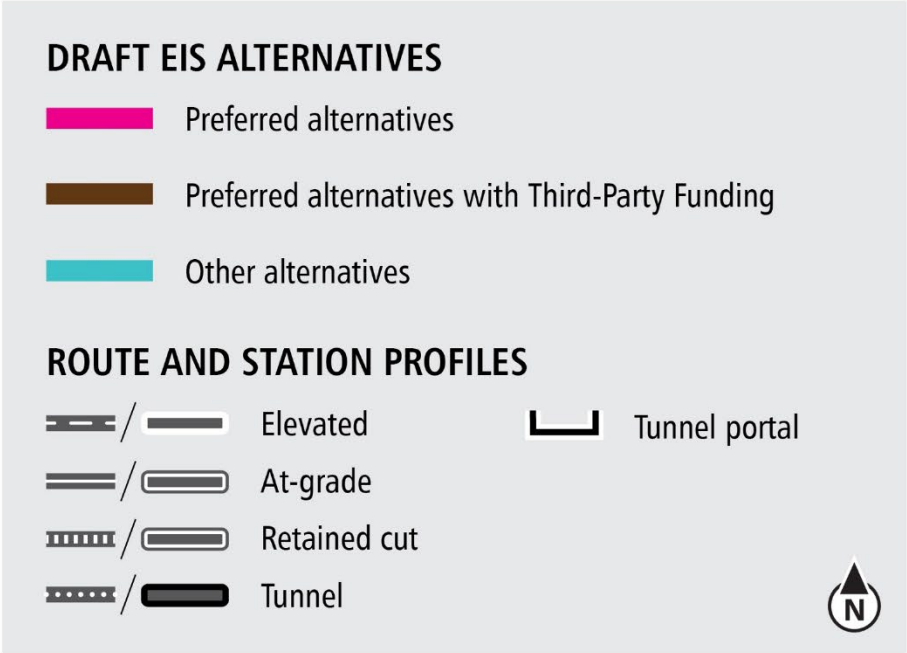
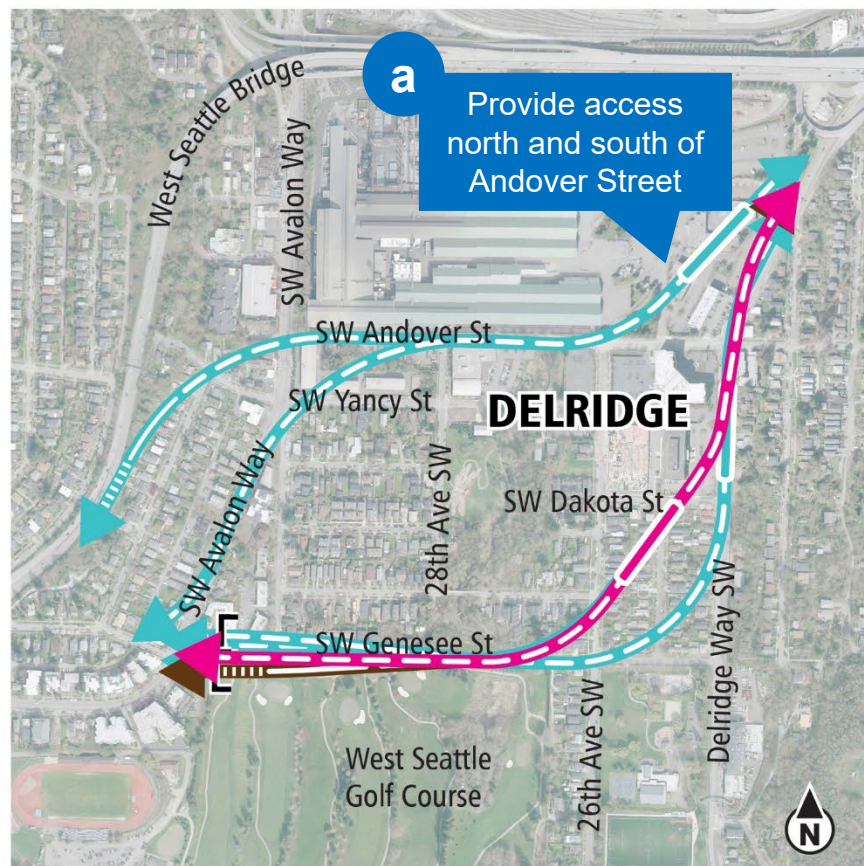
- Potentially address **other risks or opportunities**

Other refinement concepts summary



Delridge segment

Other refinement concepts Delridge



Diagrams are not to scale and all measurements are approximate for illustration purposes only.

a.1

Provide access north and south of Andover Street



Provide access north and south of Andover Street



Discussion: Hearing from CAG members

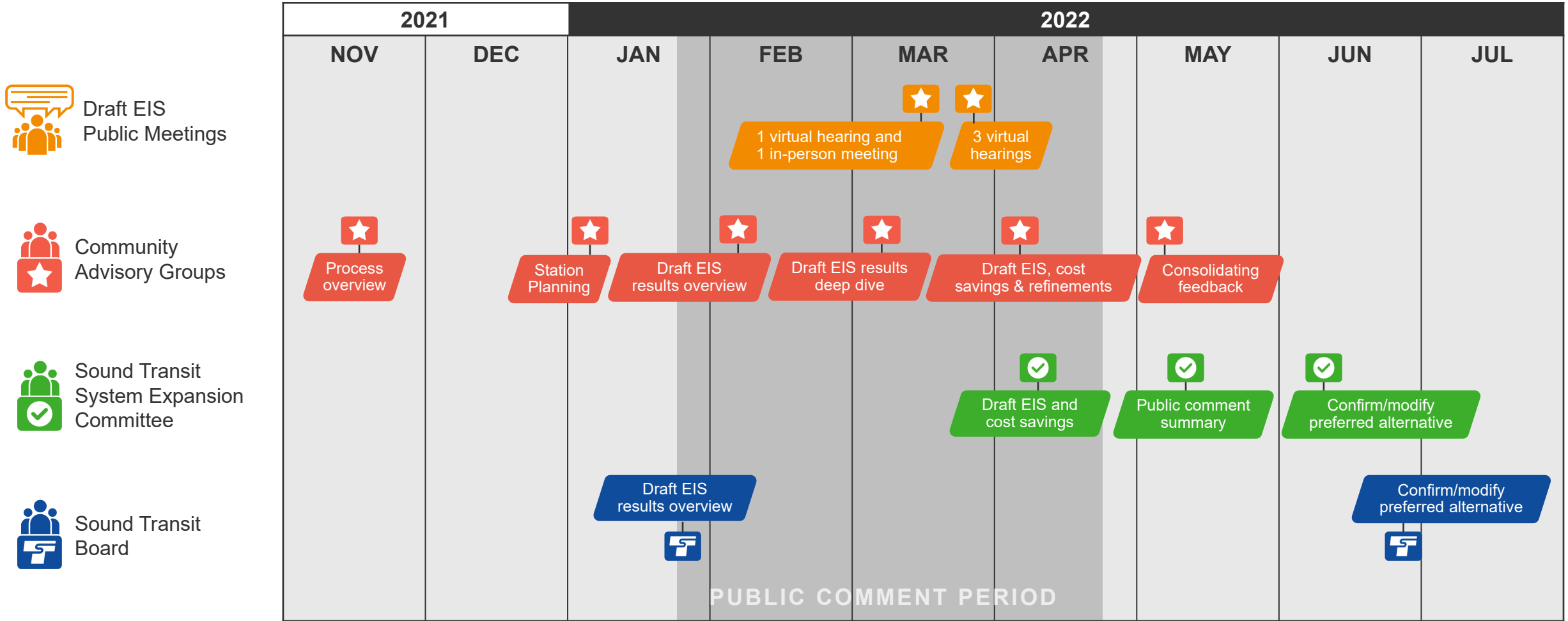
Questions or reflections on the potential cost savings and refinement concepts?

Agenda

- Welcome and review CAG progress
- Begin to identify issues, tradeoffs of Draft EIS alternatives
- City of Seattle: Draft EIS Review
- Potential cost savings and refinements ideas
- ***Next steps and next meeting***

Community engagement and collaboration

Draft Environmental Impact Statement (EIS)



Upcoming Community Advisory Groups



CID/SODO Community Advisory Group

Draft EIS, Cost Savings and Refinements

Wednesday, April 13, 2022 from 5pm to 7pm

Interbay/Ballard Community Advisory Group

Consolidating Feedback

Tuesday, May 4, 2022 from 5pm to 7pm

Downtown Community Advisory Group

Consolidating Feedback

Thursday, May 5, 2022 from 5pm to 7pm

West Seattle/Duwamish Community Advisory Group

Consolidating Feedback

Tuesday, May 10, 2022 from 5pm to 7pm

Looking ahead to our final meeting

Please consider these questions:

- What are your thoughts on *issues and tradeoffs* between the alternatives?
- What are your thoughts on a *preferred alternative*?
- What are your thoughts on the *cost saving and refinement ideas*?

 *wsblink.participate.online*

