

# ***West Seattle and Ballard Link Extensions***

*West Seattle/Duwamish Community Advisory Group*  
**Draft EIS Deep Dive Exhibit: Visual Effects**

3/8/2022



# *Visual Effects*

# ***Visual in the Draft EIS***

## ***Chapter 4, section 4.2.5***

- Duwamish: 4.2.5.3.3
- Delridge: 4.2.5.3.4
- West Seattle Junction: 4.2.5.3.5

## ***Appendix N.2 Visual and Aesthetics Technical Report***

- 2.1: Duwamish
- 2.2: Delridge
- 2.3: West Seattle Junction

# *Visual in the Draft EIS*

## *Key observation points/simulations*

- The locations used for each simulation are called key observation points (KOPs). KOPs are used to depict current views toward a proposed project and how the views would change with the project.

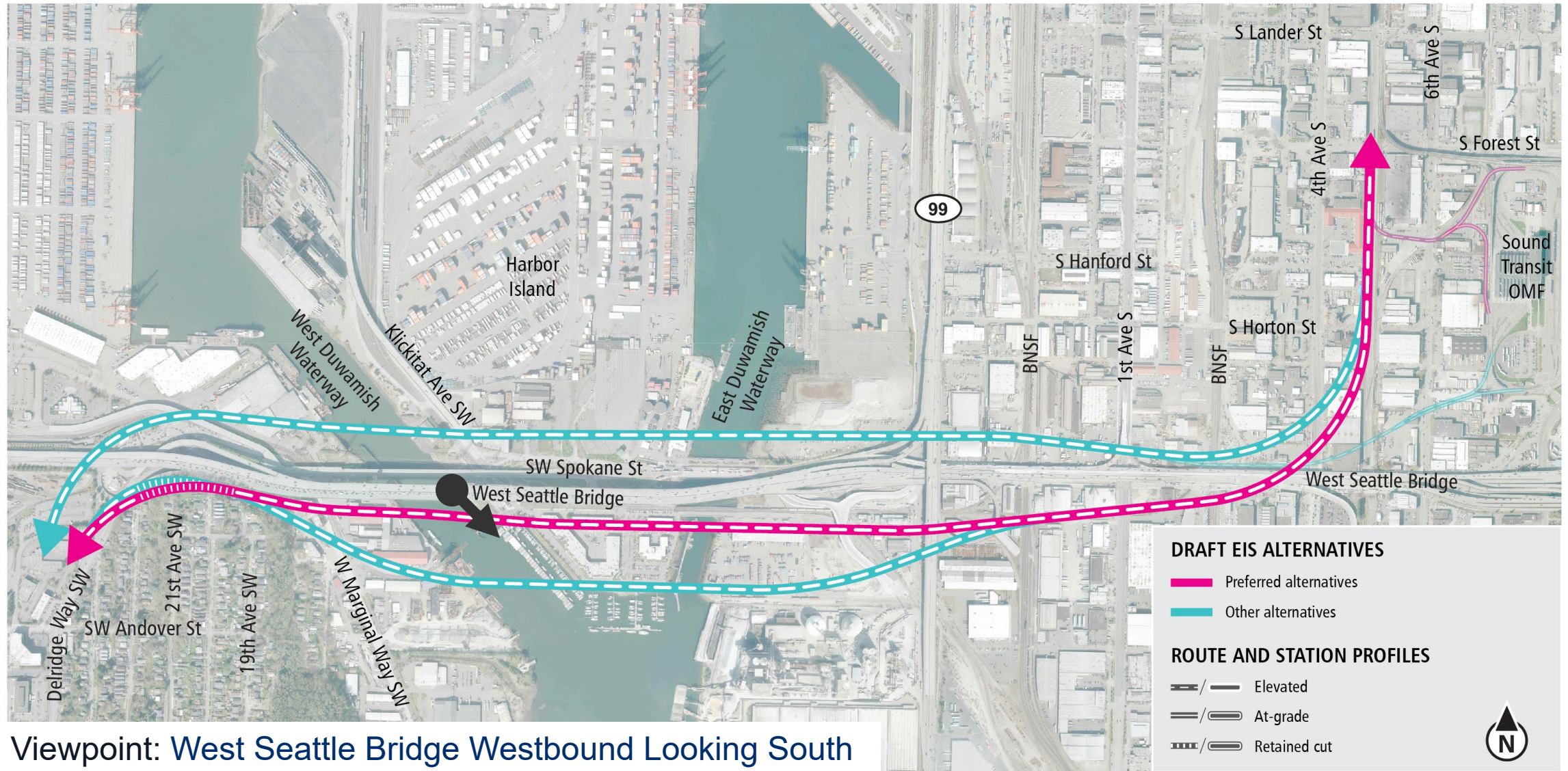
## *Impact Assessment*

- Impact assessment is for the entire corridor, regardless of whether a simulation is prepared.



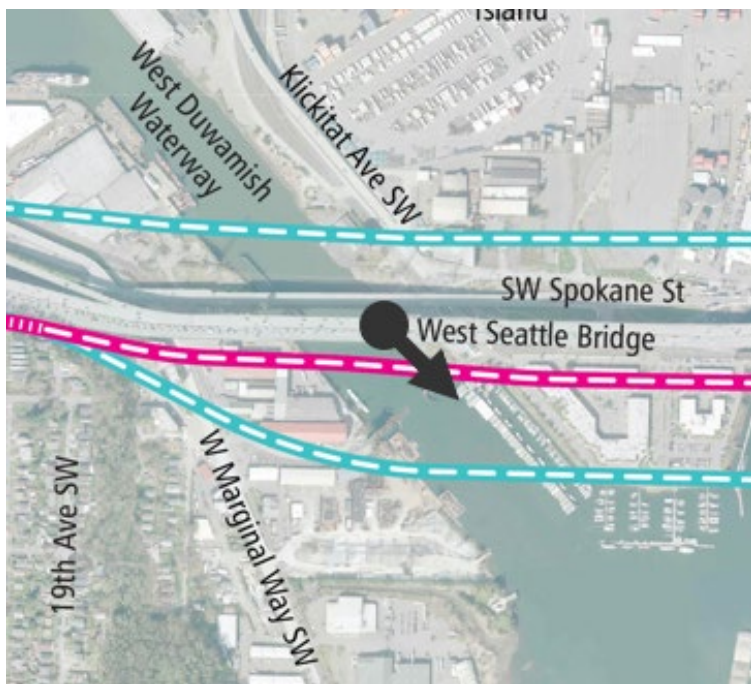
***Duwamish segment***

# Draft EIS alternatives Duwamish





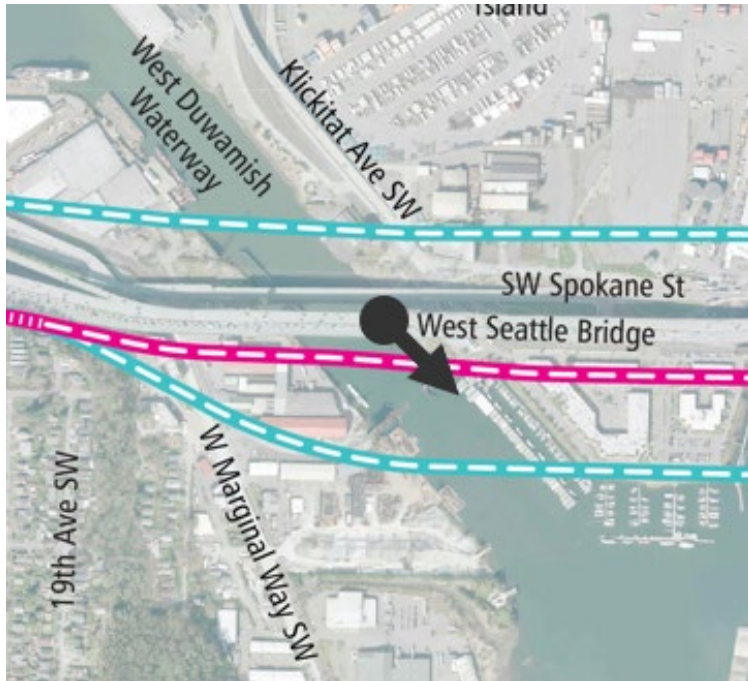
## Existing Condition



Viewpoint: West Seattle Bridge Westbound Looking South



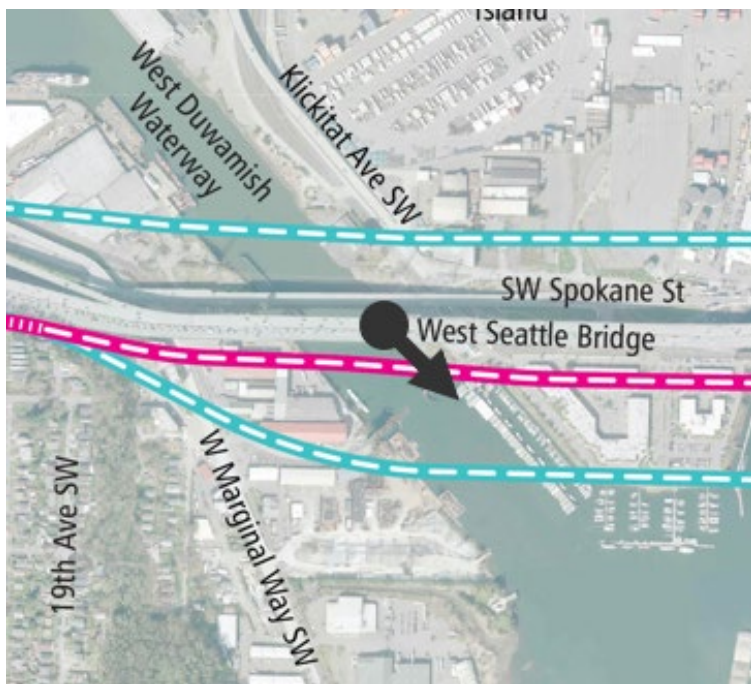
## South Crossing Alternative



Viewpoint: West Seattle Bridge Westbound Looking South



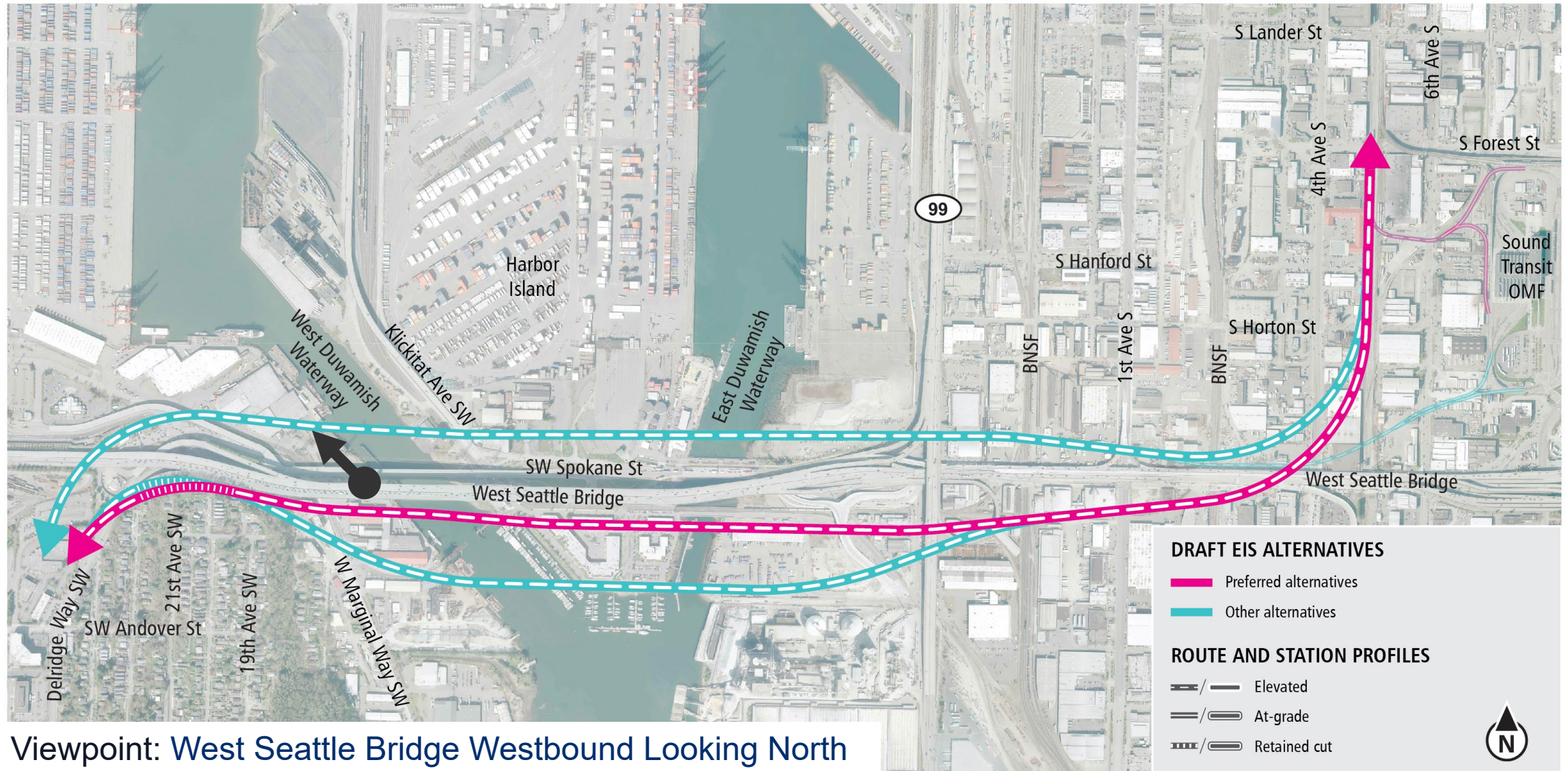
## South Edge Crossing Alignment Option



Viewpoint: West Seattle Bridge Westbound Looking South



# Draft EIS alternatives Duwamish



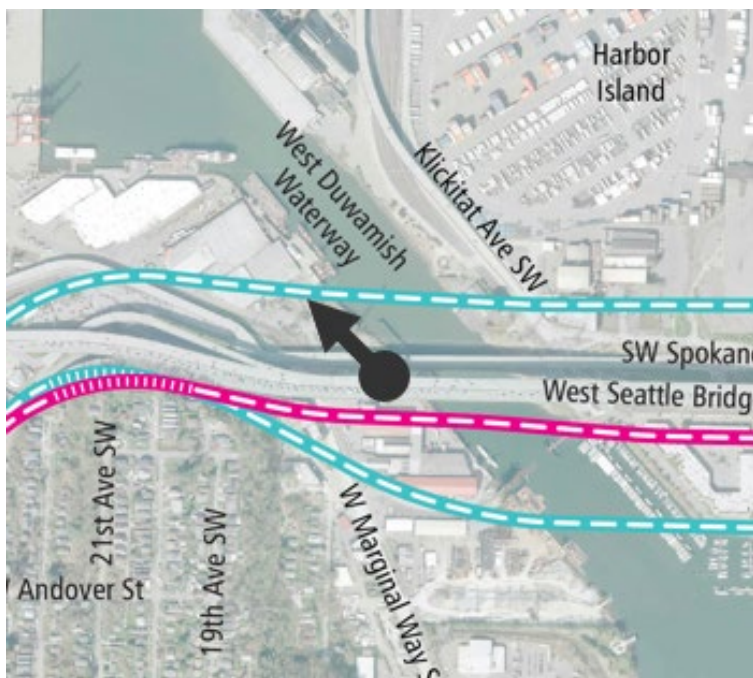


## Existing Condition



Viewpoint: West Seattle Bridge Westbound Looking North

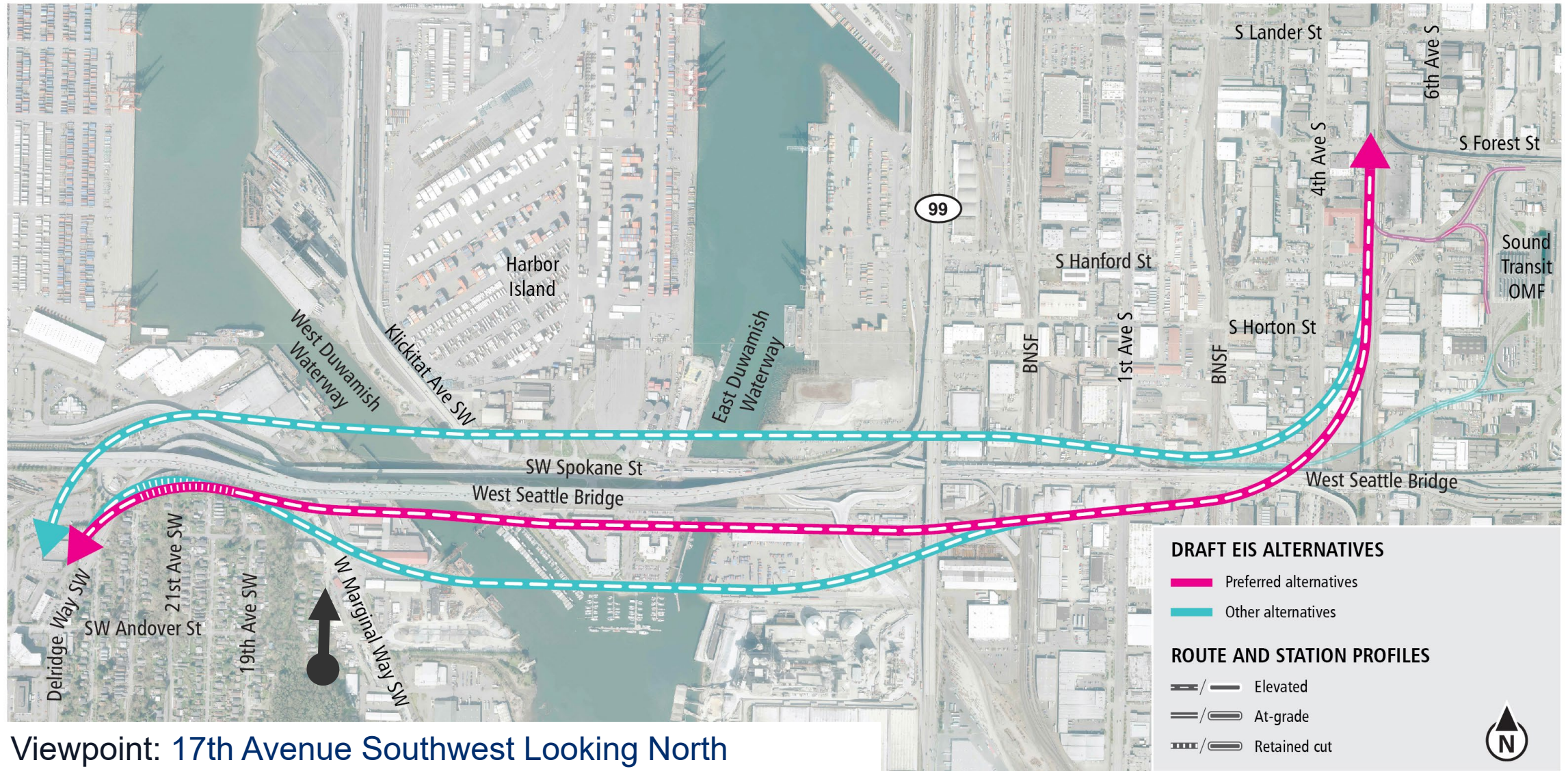
## North Crossing Alignment Alternative



Viewpoint: West Seattle Bridge Westbound Looking North

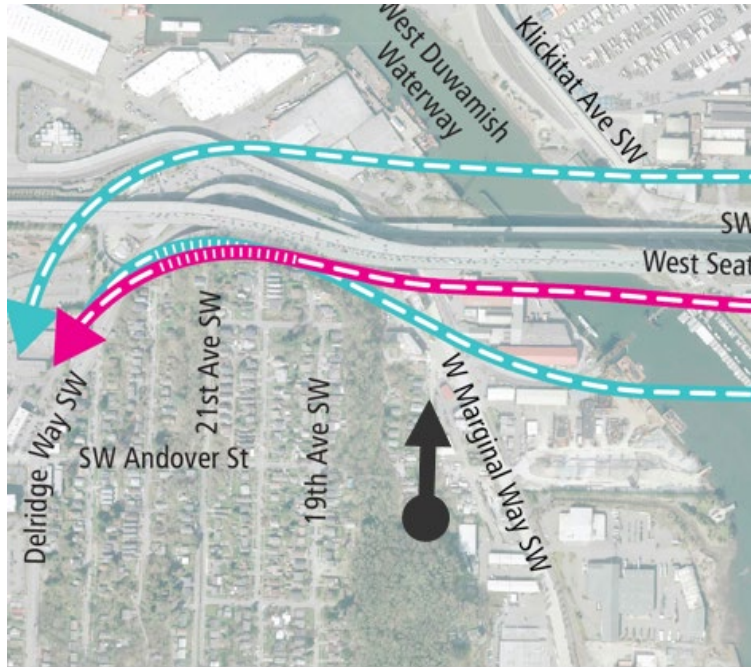


# Draft EIS alternatives Duwamish





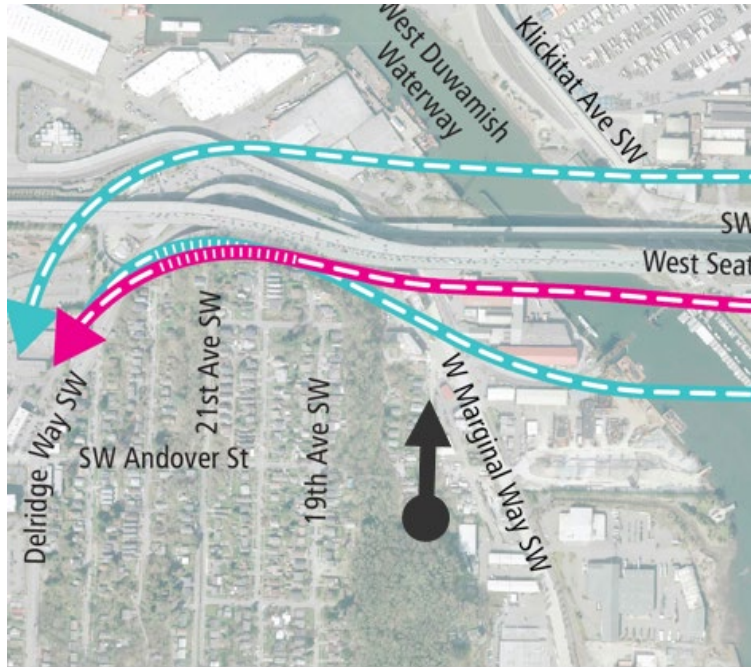
## Existing Condition



Viewpoint: 17th Avenue Southwest Looking North



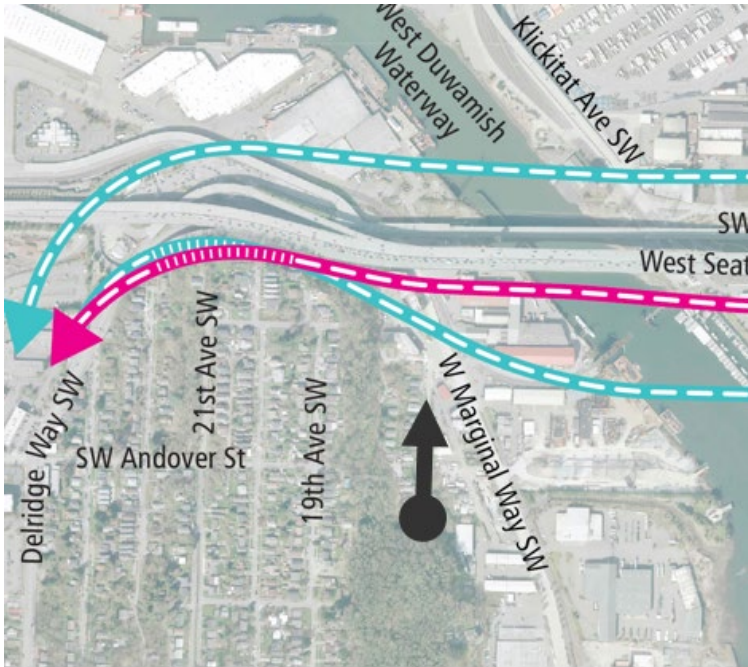
## South Crossing Alternative



Viewpoint: 17th Avenue Southwest Looking North



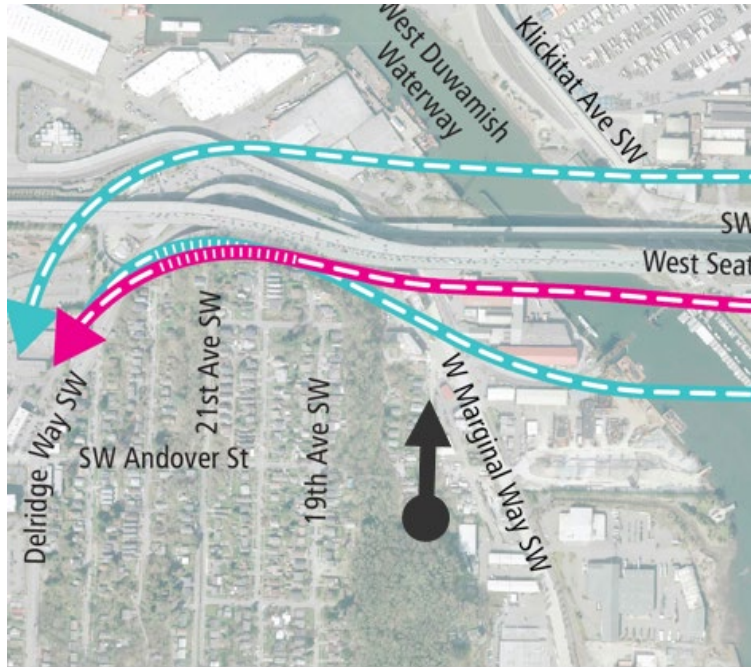
## South Edge Crossing Alignment Option



Viewpoint: 17th Avenue Southwest Looking North



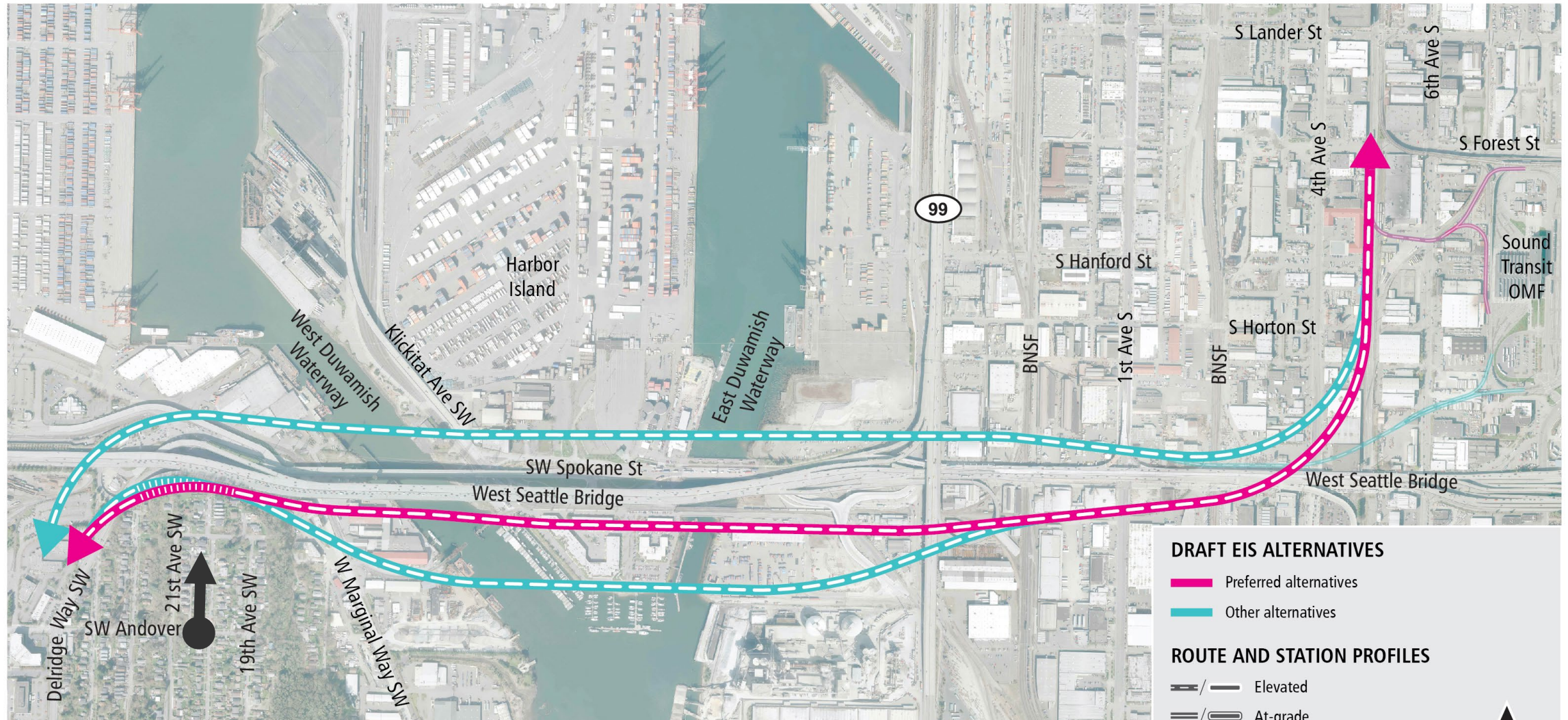
## North Crossing Alignment Alternative



Viewpoint: 17th Avenue Southwest Looking North



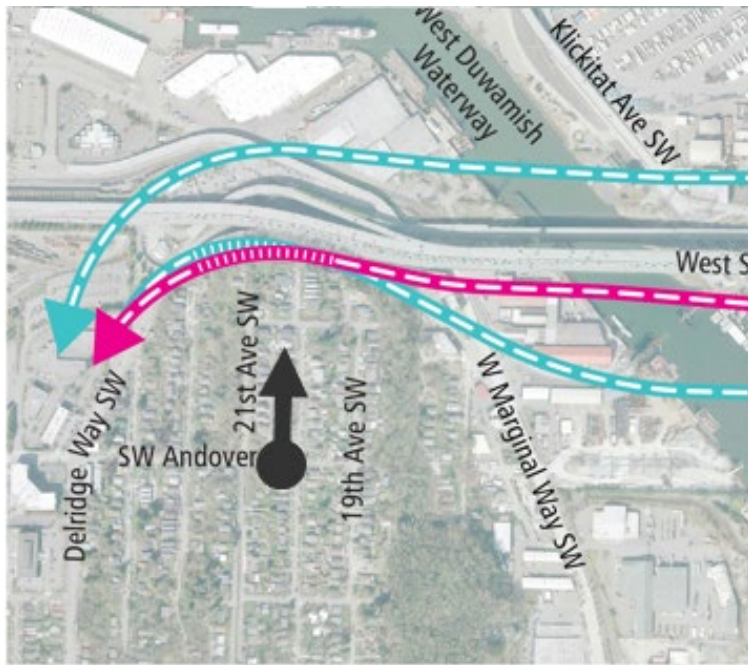
# Draft EIS alternatives Duwamish



Viewpoint: Looking North from Southwest Charlestown Street and 20th Avenue Southwest



## Existing Condition

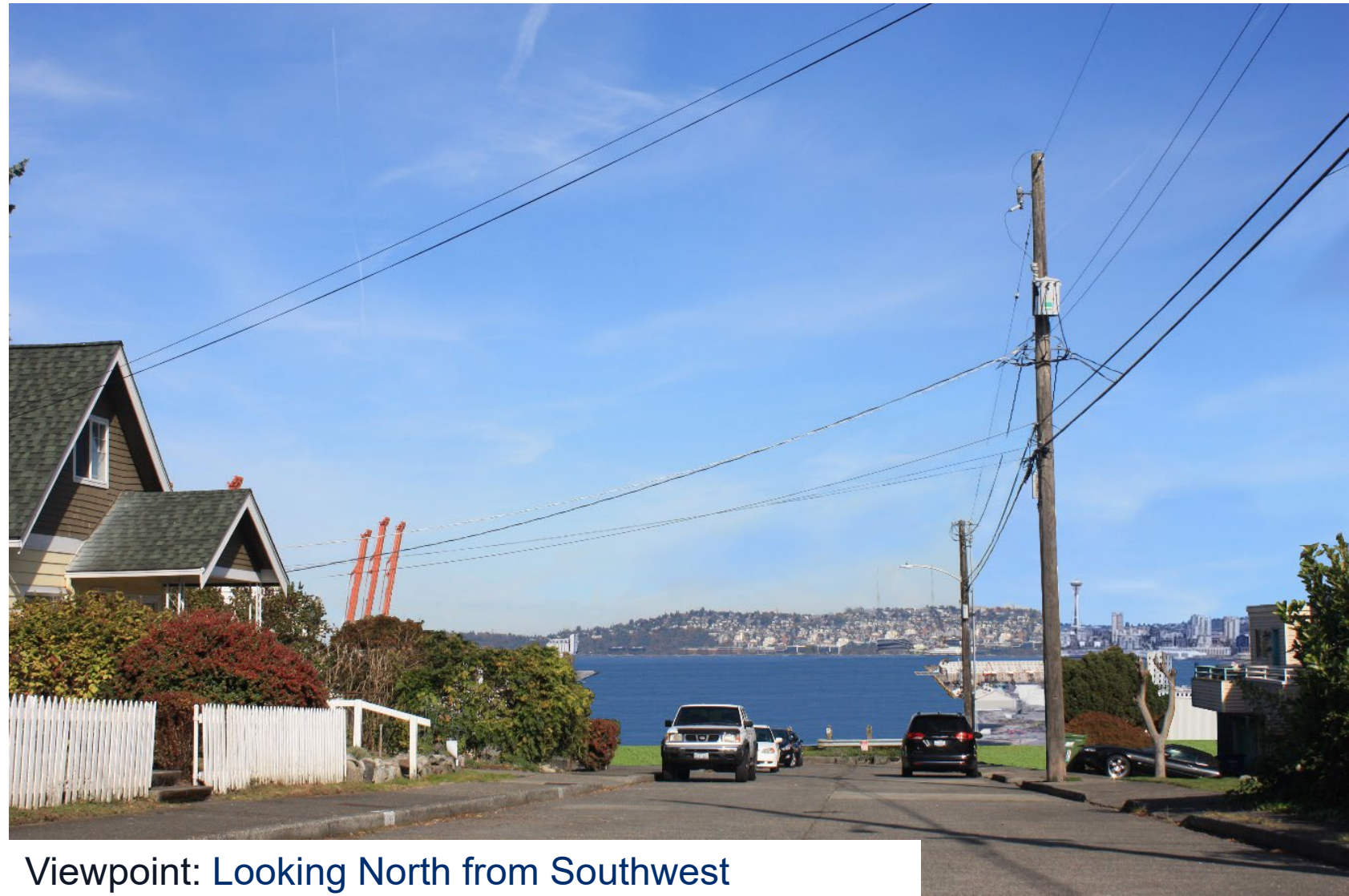
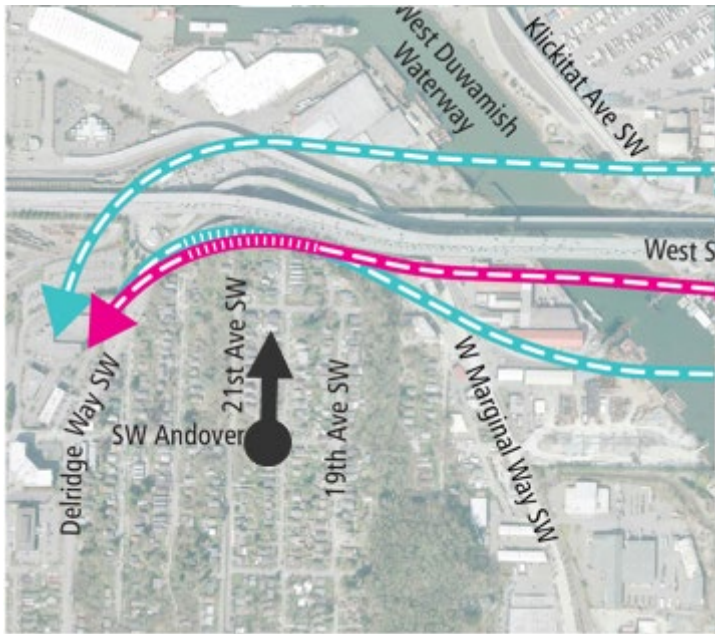


Viewpoint: Looking North from Southwest Charlestown Street and 20th Avenue Southwest



## South Crossing Alternative

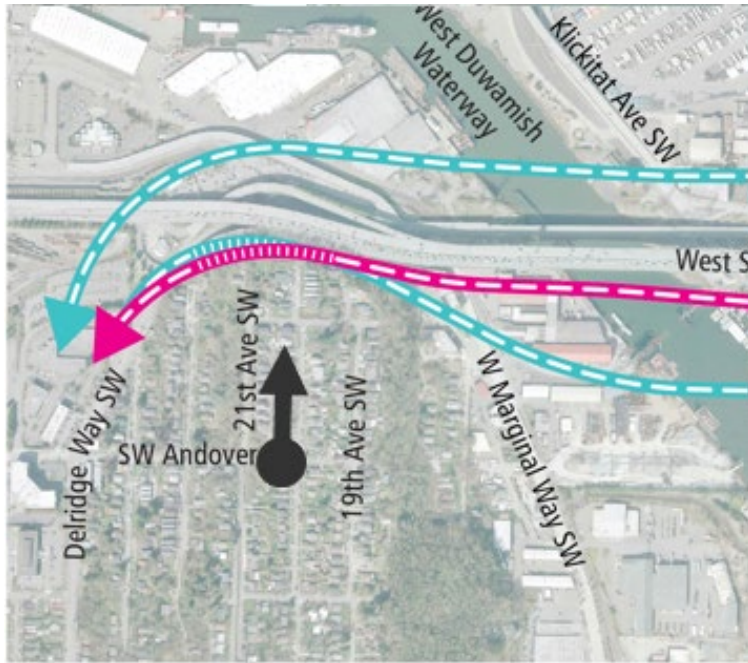
## South Edge Crossing Alignment Option



Viewpoint: Looking North from Southwest  
Charlestown Street and 20th Avenue Southwest



## North Crossing Alignment Alternative

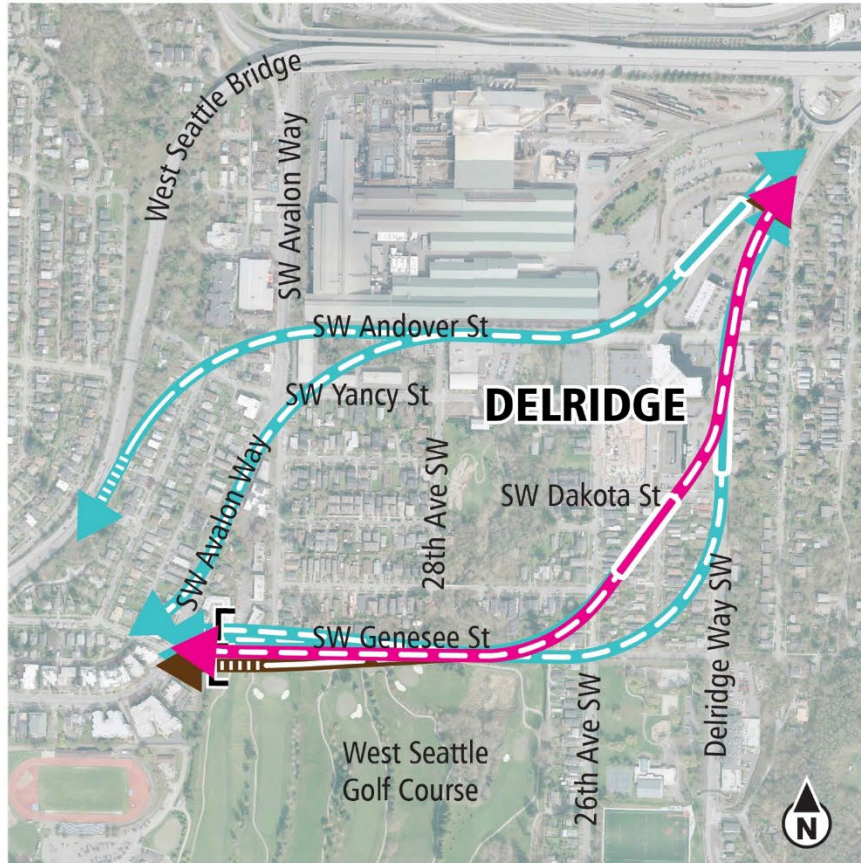


Viewpoint: Looking North from Southwest  
Charlestown Street and 20th Avenue Southwest




***Delridge segment***




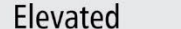



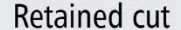


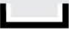
# Draft EIS alternatives Delridge



## DRAFT EIS ALTERNATIVES

-  Preferred alternatives
-  Preferred alternatives with Third-Party Funding
-  Other alternatives

## ROUTE AND STATION PROFILES

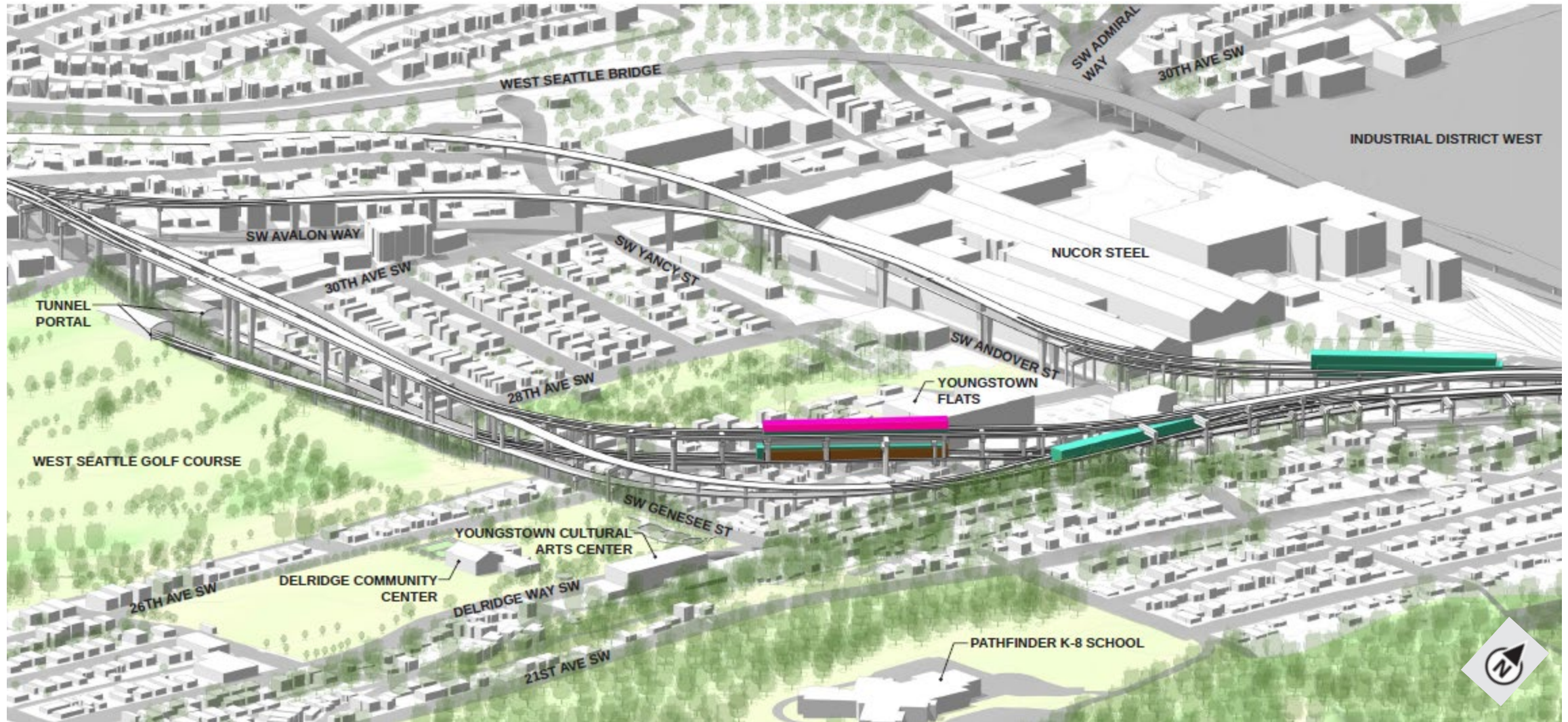
-  /  Elevated
  -  /  At-grade
  -  /  Retained cut
  -  /  Tunnel
-  Tunnel portal



*Diagrams are not to scale and all measurements are approximate for illustration purposes only.*

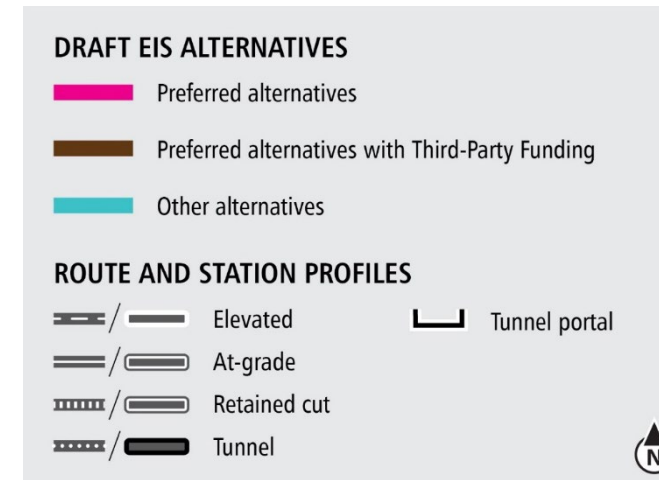
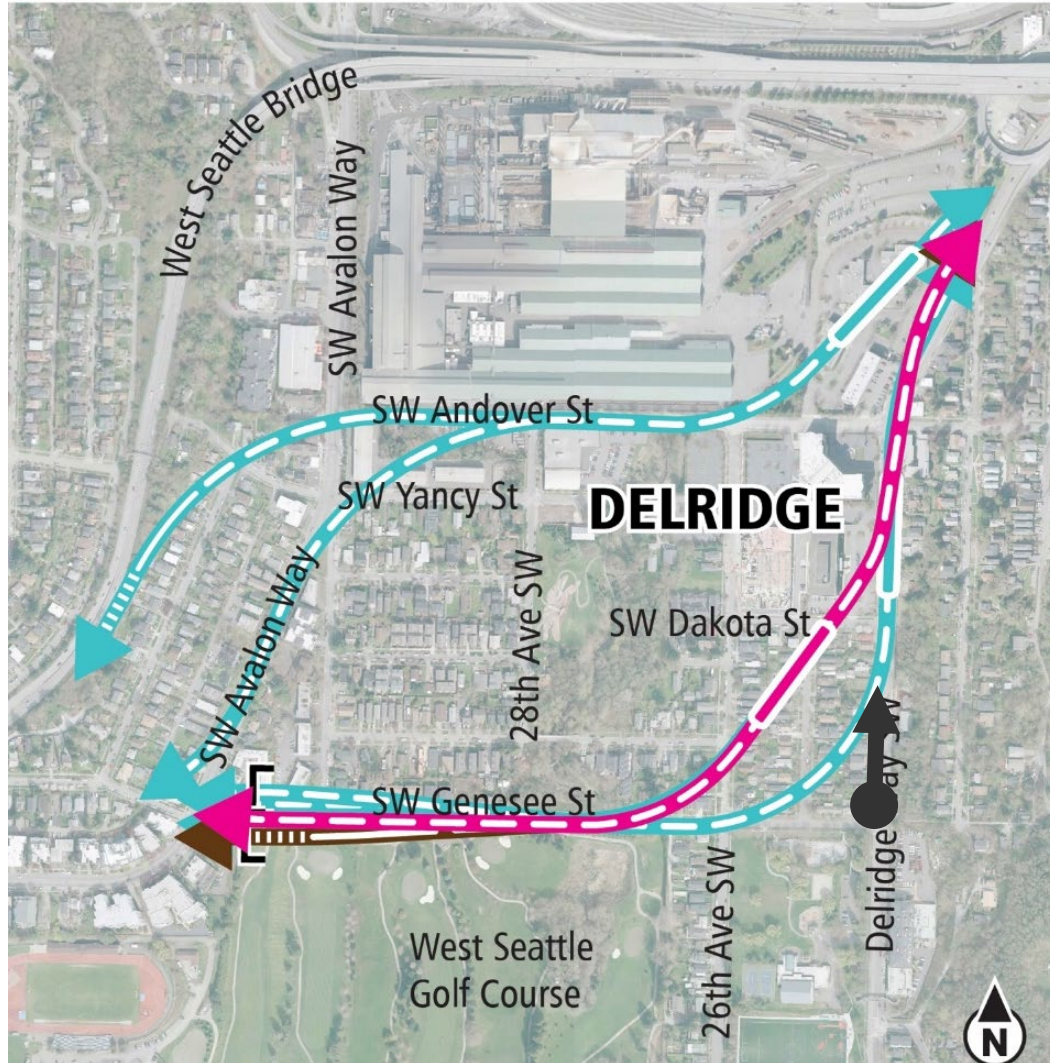


# Draft EIS alternatives Delridge





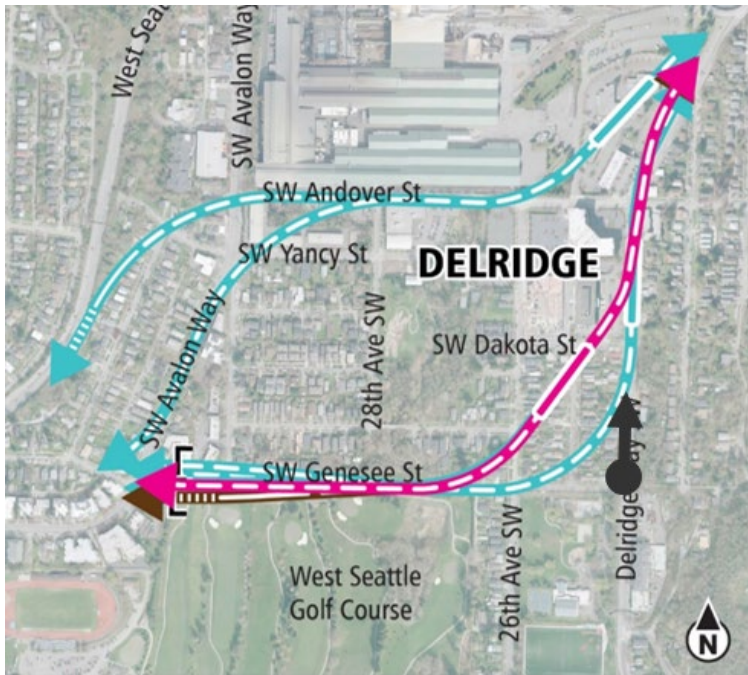
# Draft EIS alternatives Delridge



Viewpoint: Looking North along Delridge Way Southwest



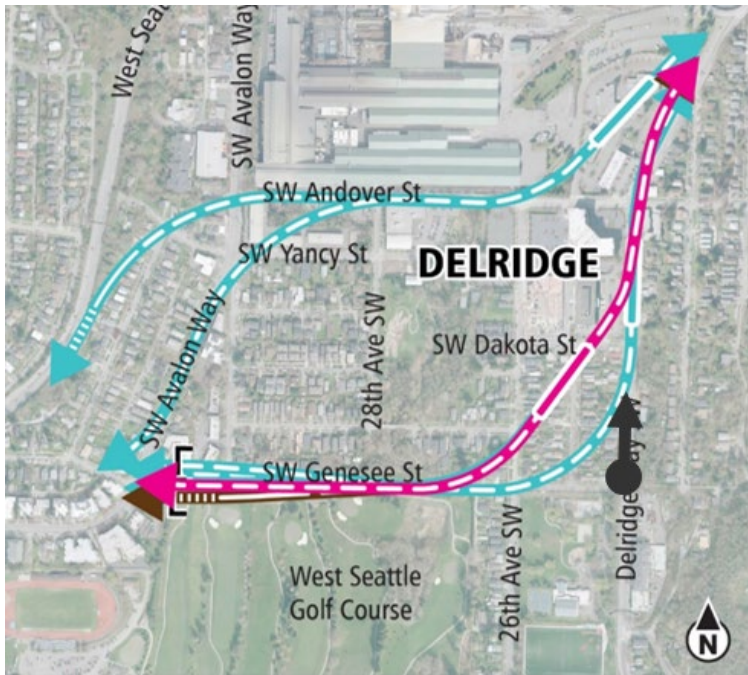
## Existing Condition



Viewpoint: Looking North along Delridge Way Southwest



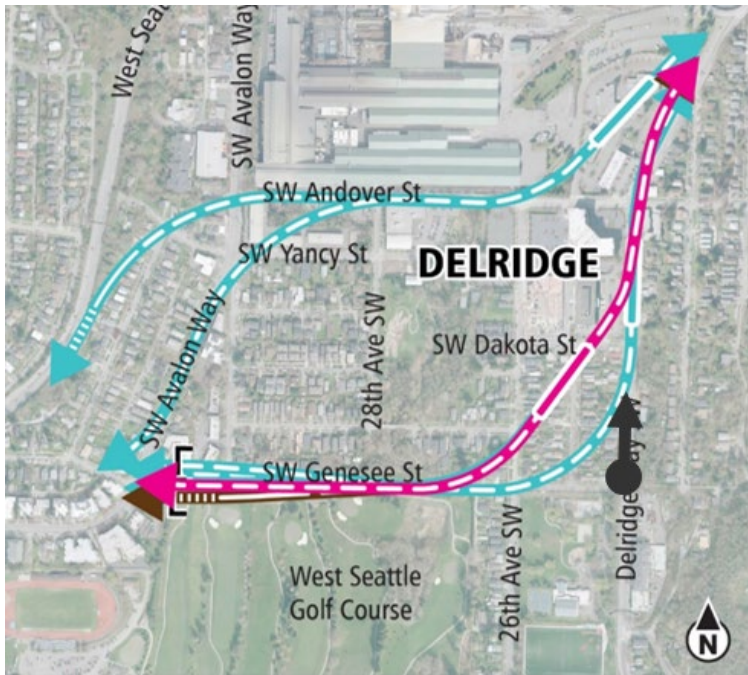
## Dakota Street Station Alternative



Viewpoint: Looking North along Delridge Way Southwest



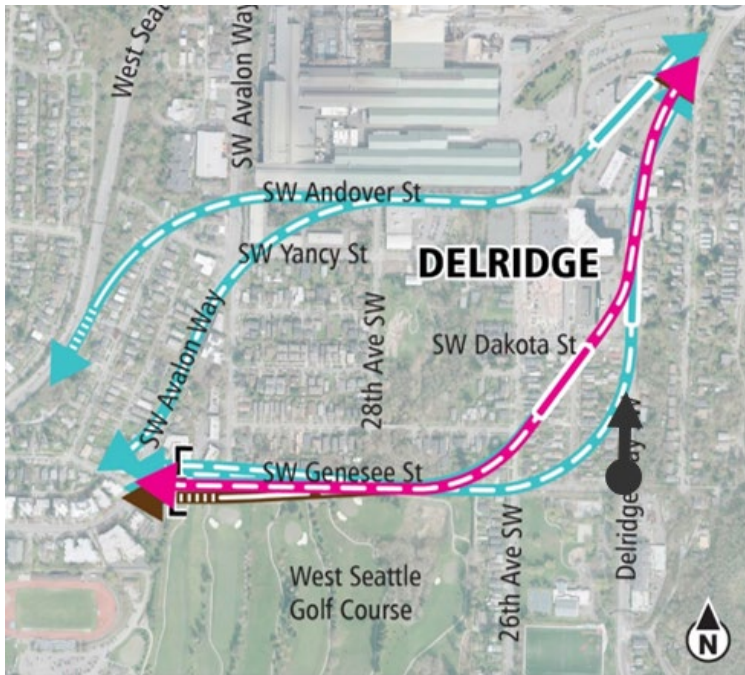
## Dakota Street Station Alternative North Alignment



Viewpoint: Looking North along Delridge Way Southwest



## Dakota Street Station Lower Height Alternative

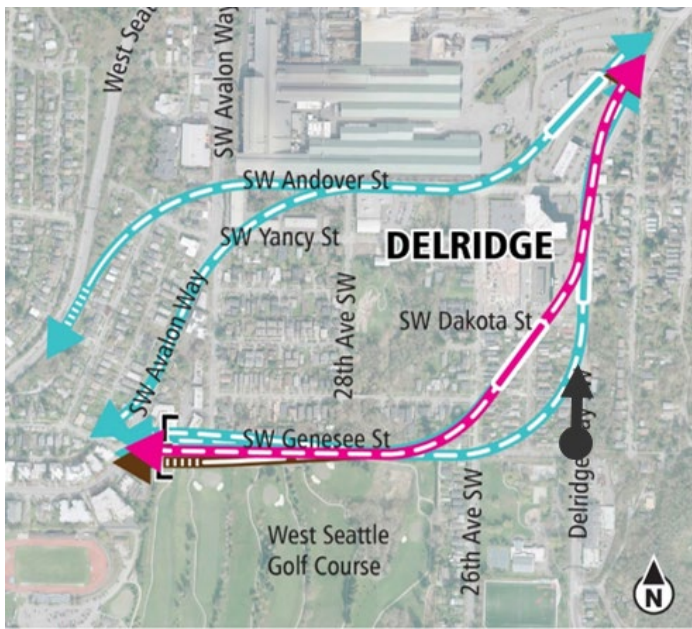


Viewpoint: Looking North along Delridge Way Southwest



## Delridge Way Station Alternative

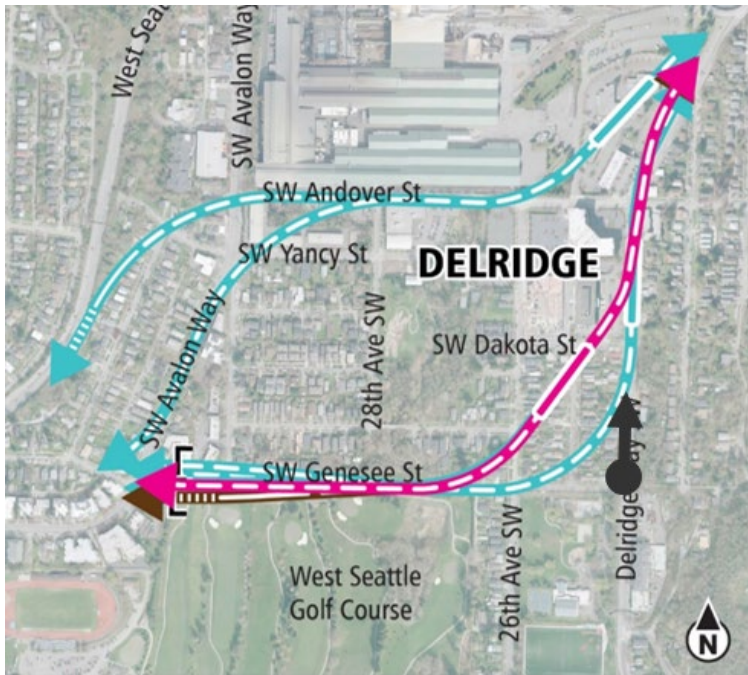
## Delridge Way Station Lower Height Alternative



Viewpoint: Looking North along Delridge Way Southwest



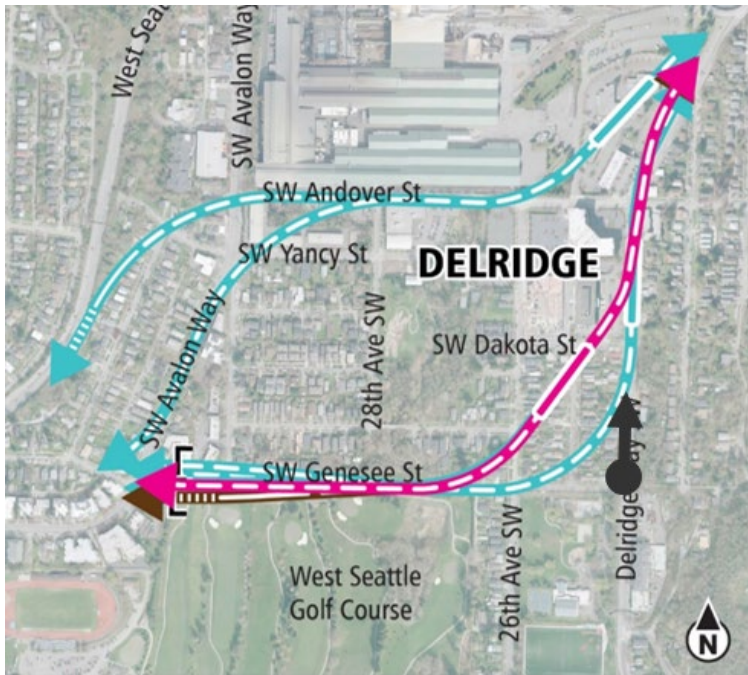
## Andover Street Station Alternative



Viewpoint: Looking North along Delridge Way Southwest



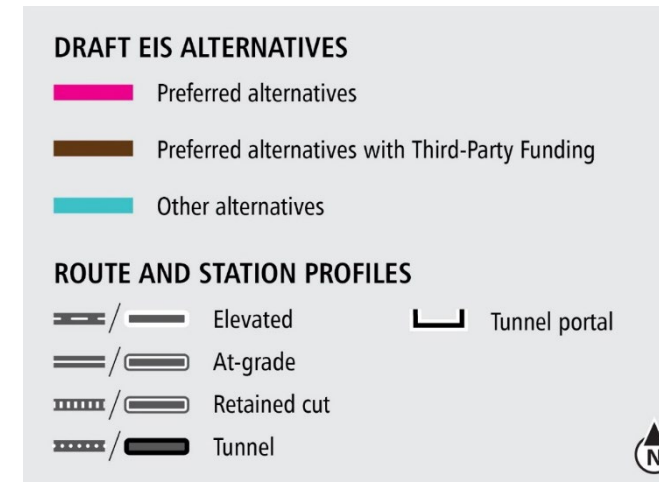
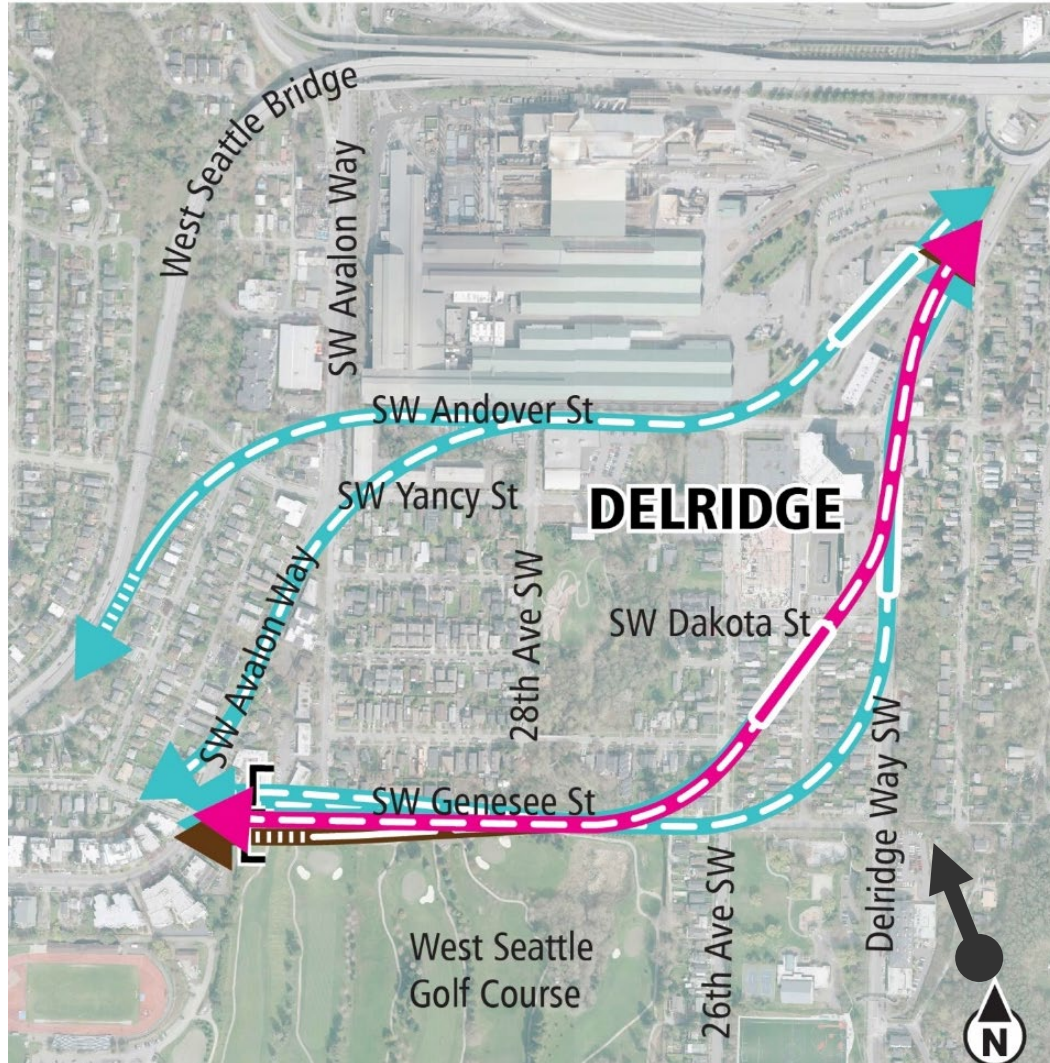
## Andover Street Station Lower Height Alternative



Viewpoint: Looking North along Delridge Way Southwest



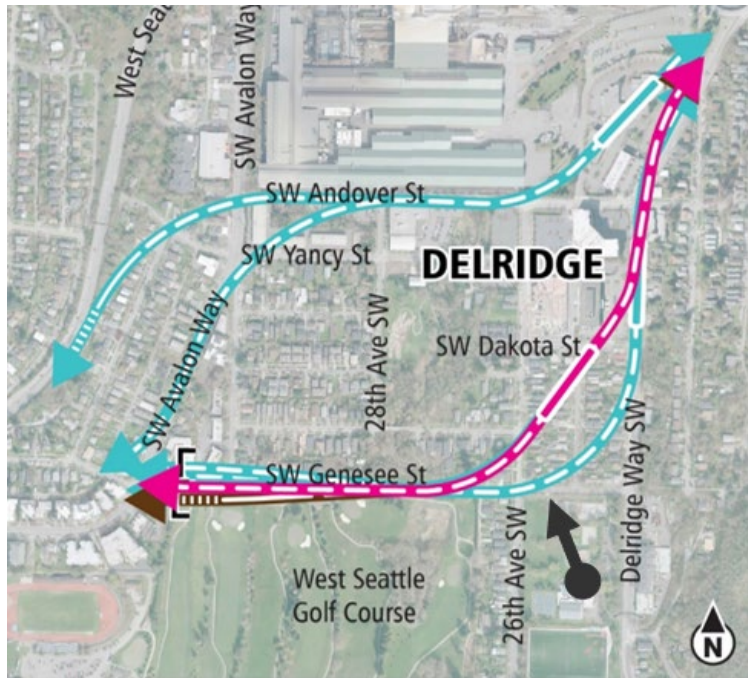
# Draft EIS alternatives Delridge



Viewpoint: Looking Northwest from Delridge Playfield



## Existing Condition

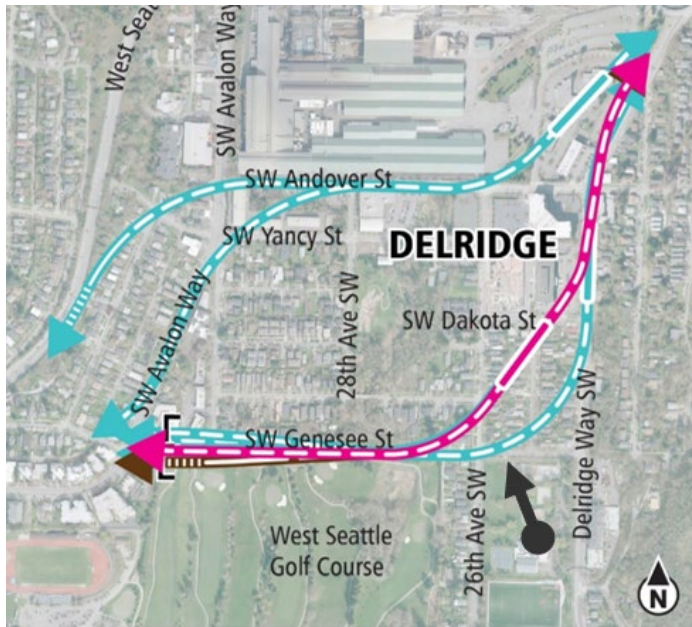


Viewpoint: Looking Northwest from Delridge Playfield



## Dakota Street Station Alternative

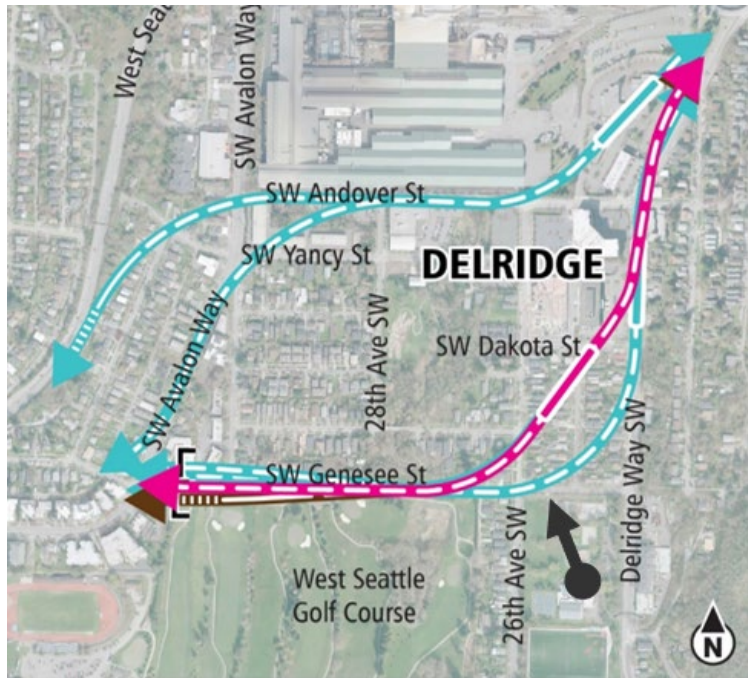
## Dakota Street Station North Alignment Alternative



Viewpoint: Looking Northwest from Delridge Playfield



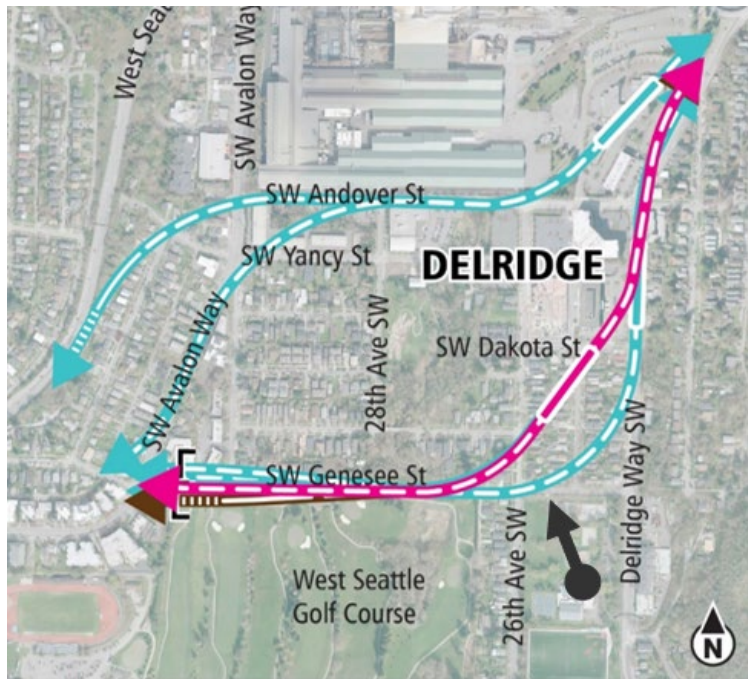
## Dakota Street Station Lower Height Alternative



Viewpoint: Looking Northwest from Delridge Playfield



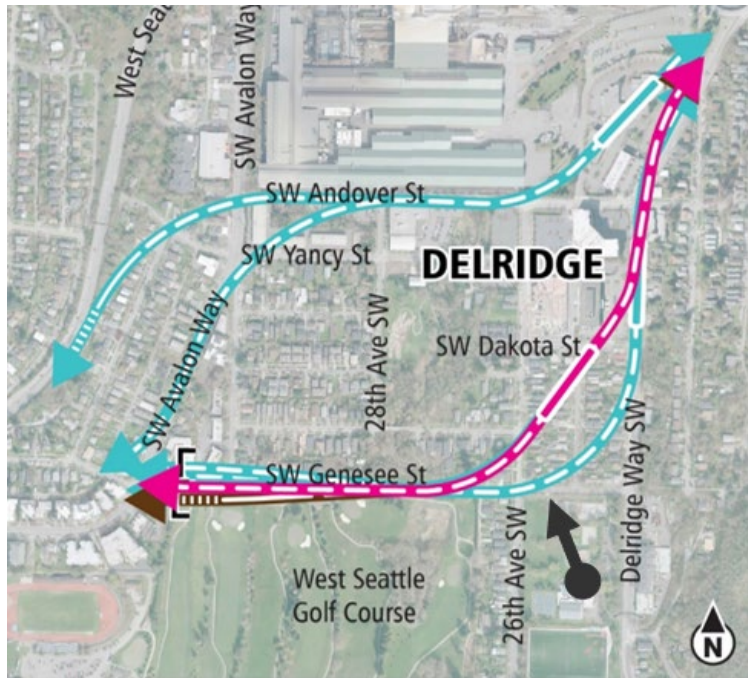
## Delridge Way Station Alternative



Viewpoint: Looking Northwest from Delridge Playfield



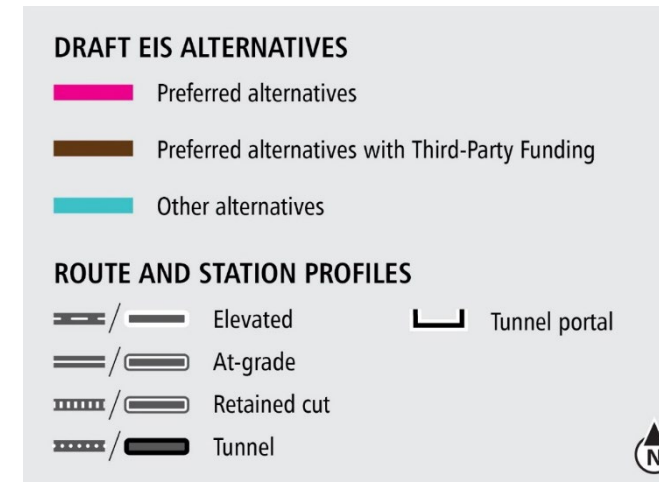
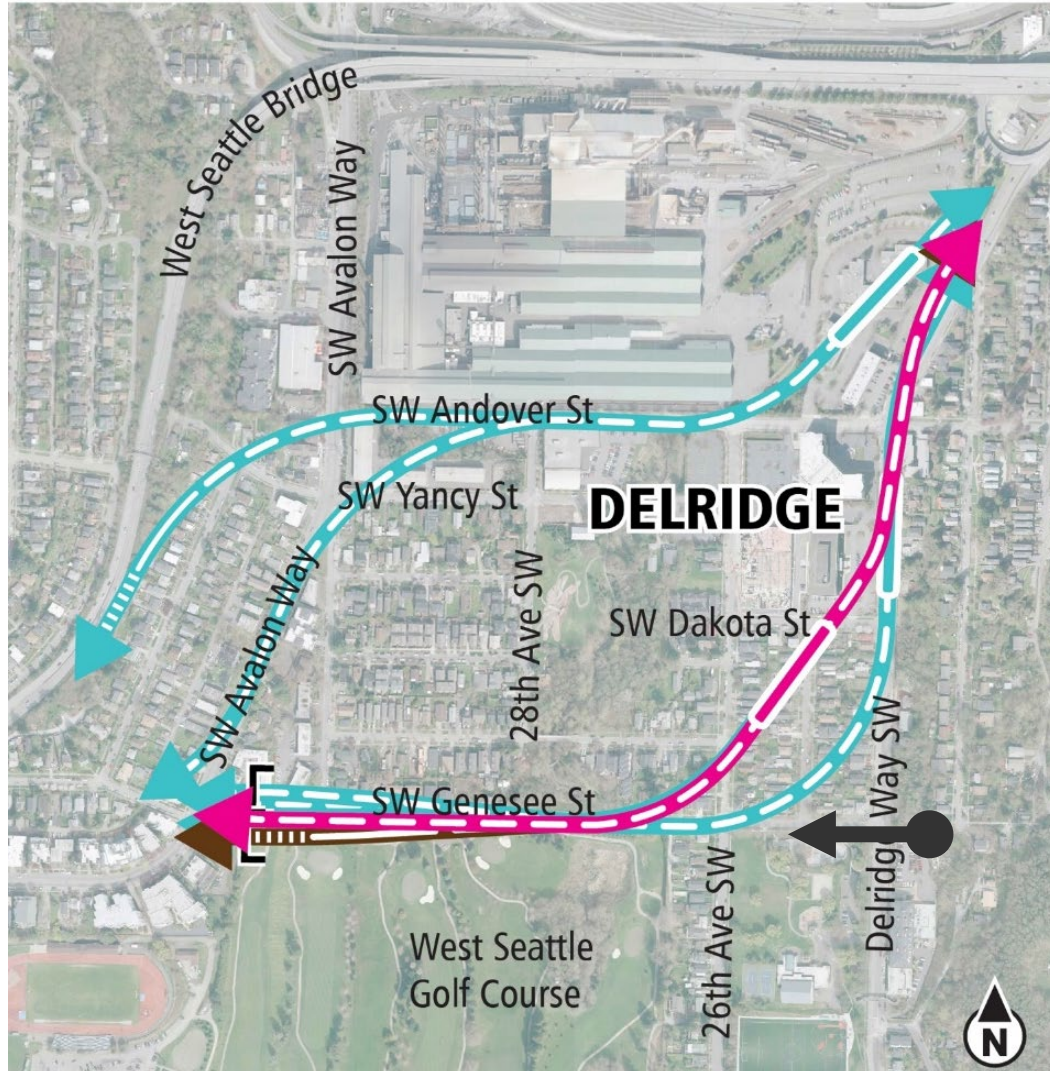
## Delridge Way Station Lower Height Alternative



Viewpoint: Looking Northwest from Delridge Playfield



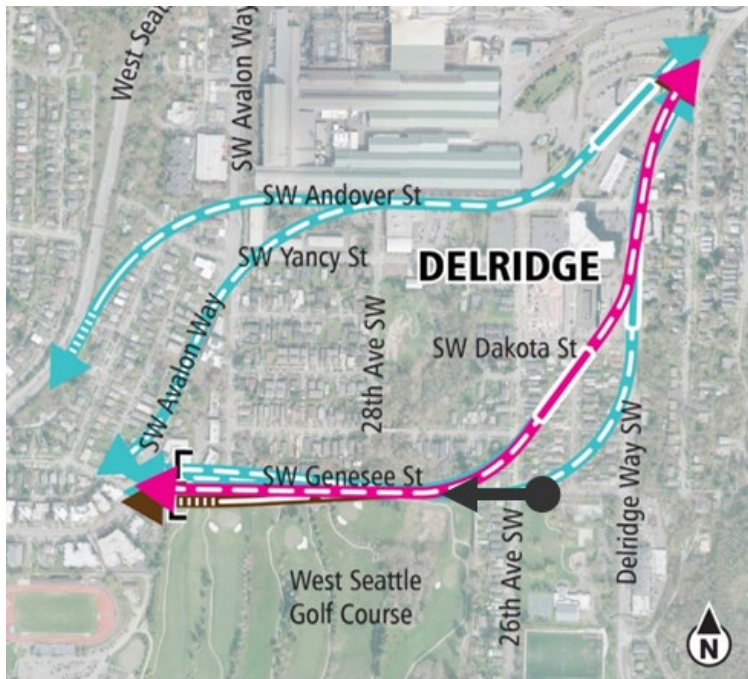
# Draft EIS alternatives Delridge



Viewpoint: Looking West along Southwest Genesee Street from Near Longfellow Creek



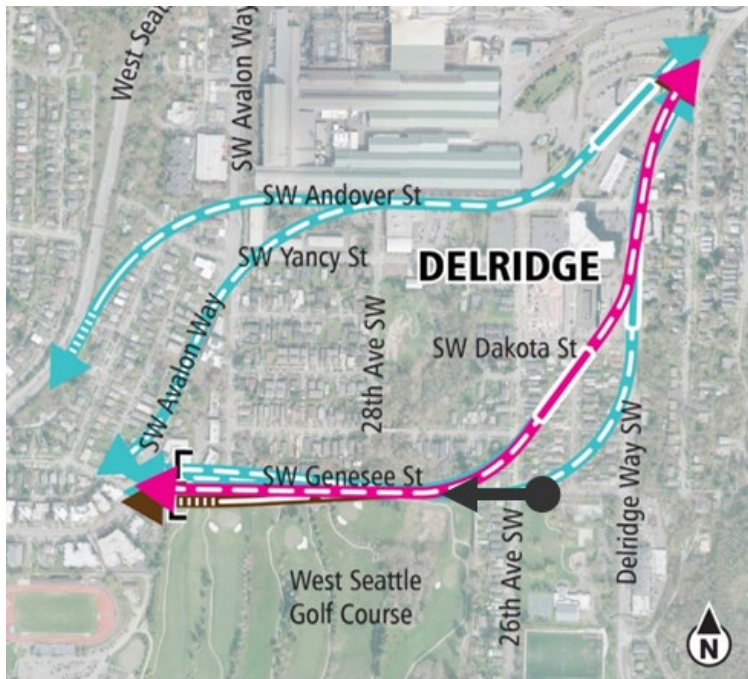
## Existing Condition



Viewpoint: Looking West along Southwest Genesee Street from Near Longfellow Creek



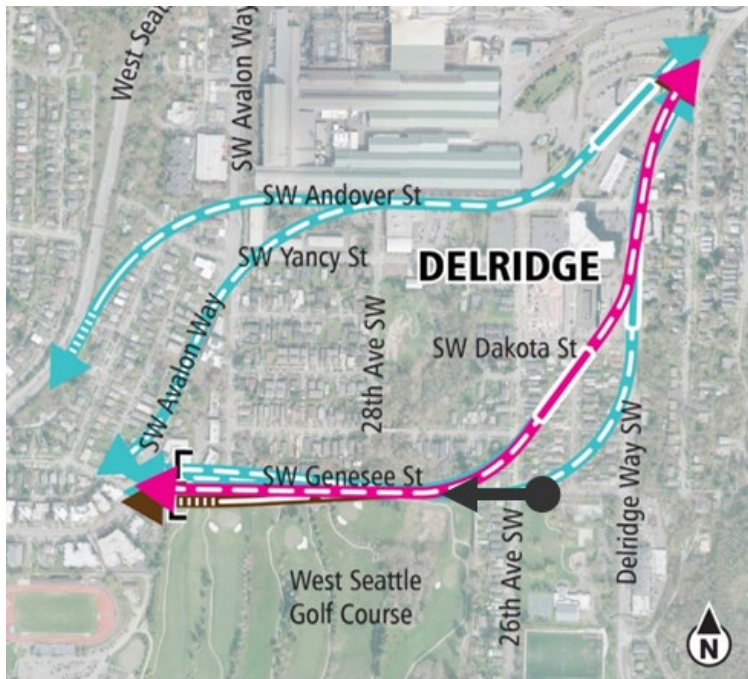
## Dakota Street Station Alternative



Viewpoint: Looking West along Southwest Genesee Street from Near Longfellow Creek



## Dakota Street Station North Alignment Alternative



Viewpoint: Looking West along Southwest  
Genesee Street from Near Longfellow Creek



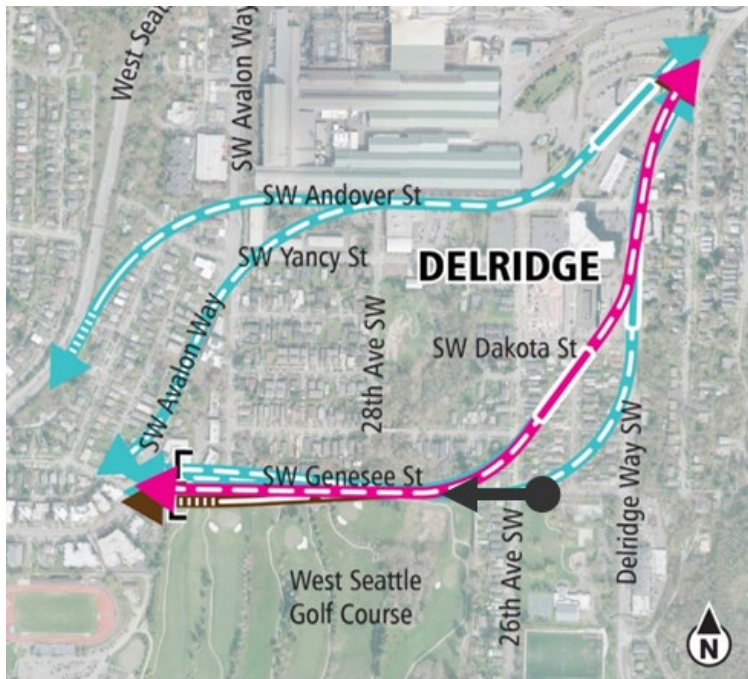
## Dakota Street Station Lower Height Alternative



Viewpoint: Looking West along Southwest  
Genesee Street from Near Longfellow Creek



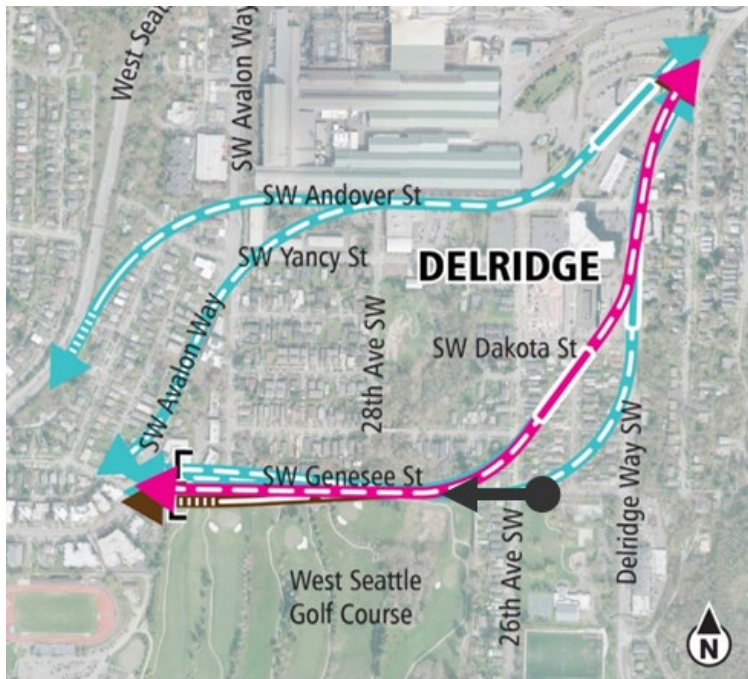
## Dakota Street Station Lower Height North Alignment Alternative



Viewpoint: Looking West along Southwest  
Genesee Street from Near Longfellow Creek



## Delridge Way Station Alternative



Viewpoint: Looking West along Southwest Genesee Street from Near Longfellow Creek



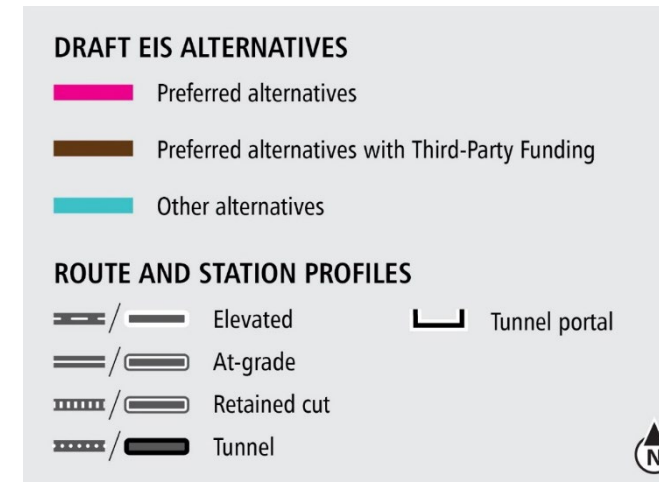
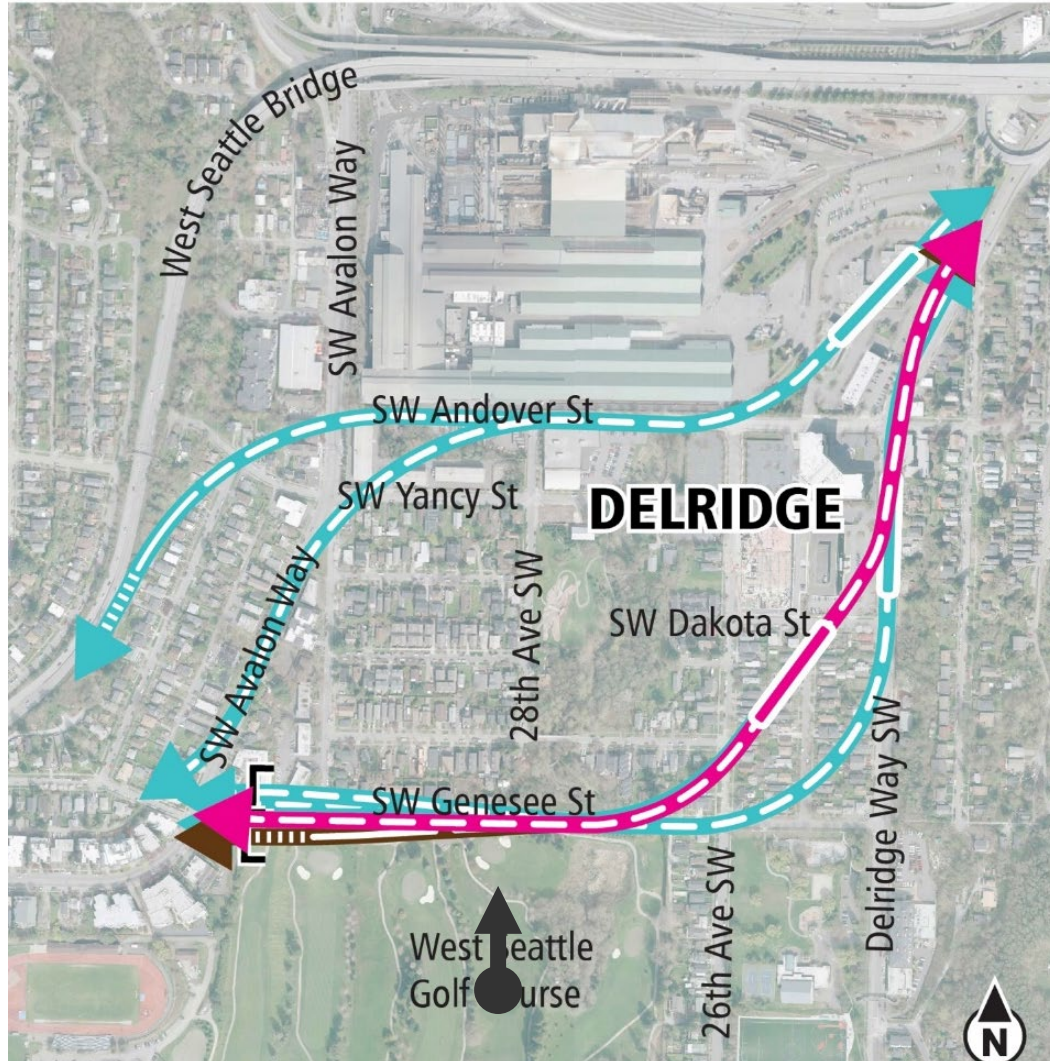
## Delridge Way Station Lower Height Alternative



Viewpoint: Looking West along Southwest  
Genesee Street from Near Longfellow Creek



# Draft EIS alternatives Delridge



Viewpoint: Looking Past the North End of the West Seattle Golf Course



## Existing Condition



Viewpoint: Looking Past the North End of the West Seattle Golf Course



## Dakota Street Station Alternative

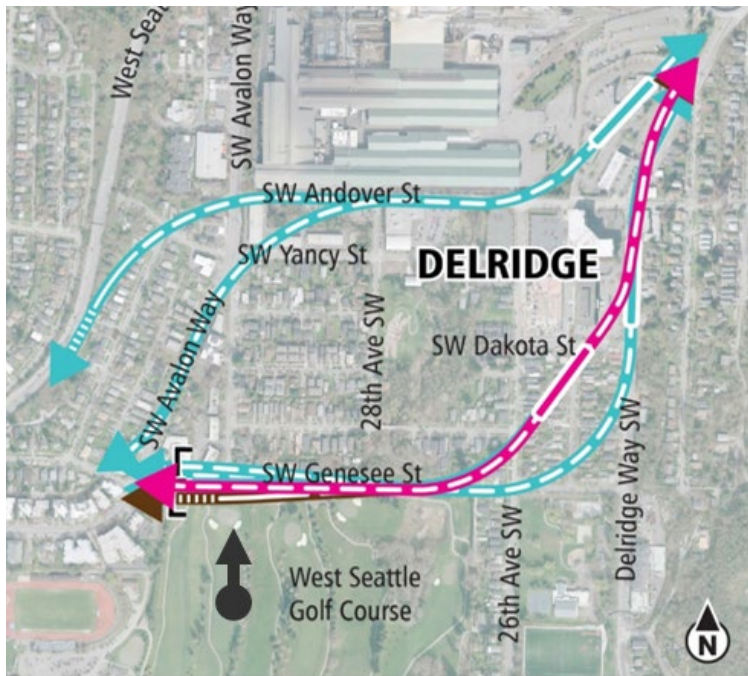
## Delridge Way Station Alternative



Viewpoint: Looking Past the North End of the West Seattle Golf Course



## Dakota Street Station North Alignment Alternative



Viewpoint: Looking Past the North End of the West Seattle Golf Course



## Dakota Street Station Lower Height Alternative

## Delridge Way Station Lower Height Alternative



Viewpoint: Looking Past the North End of the West Seattle Golf Course



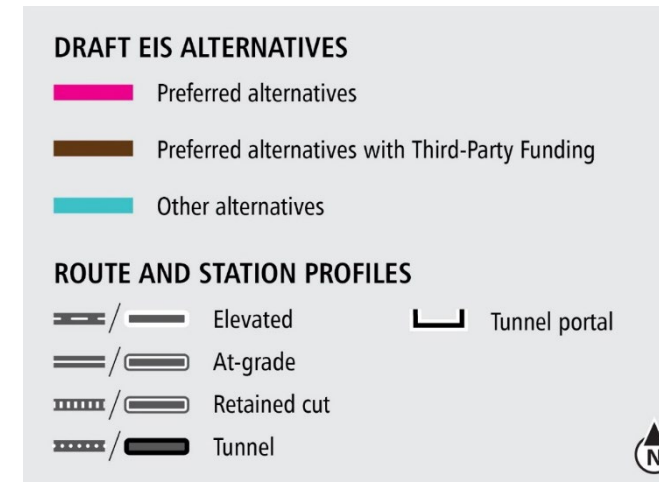
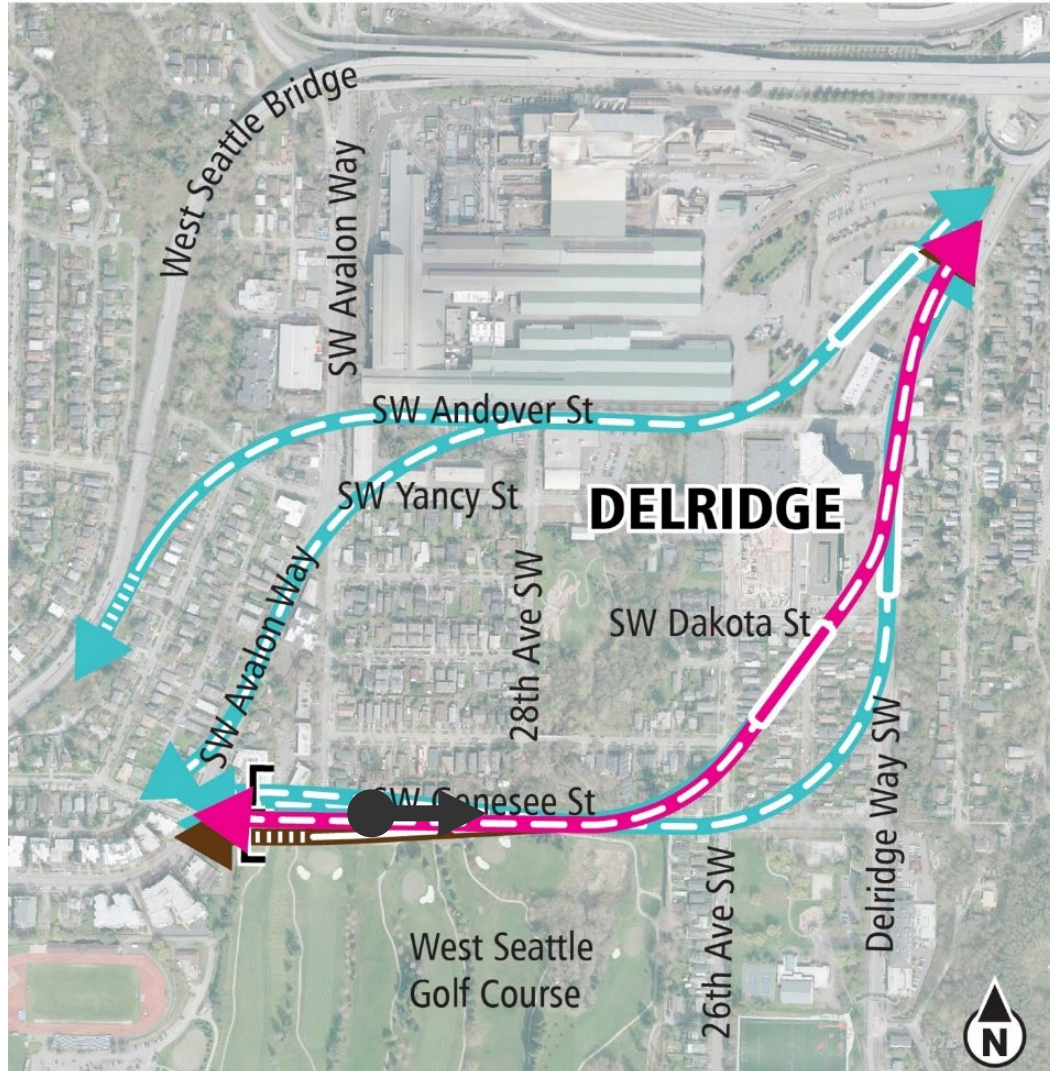
## Dakota Street Station Lower Height North Alignment Alternative



Viewpoint: Looking Past the North End of the West Seattle Golf Course



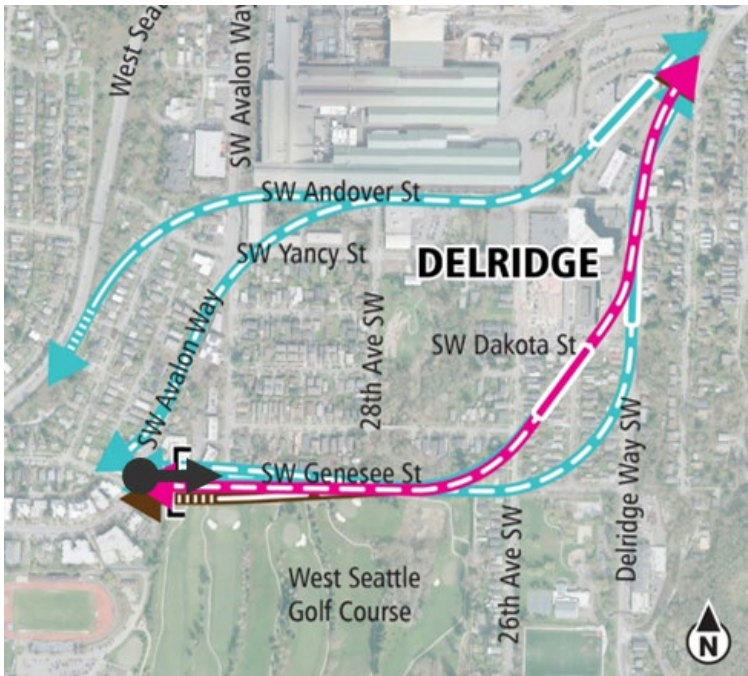
# Draft EIS alternatives Delridge



Viewpoint: Looking East along Southwest Genesee Street from Southwest Avalon Way



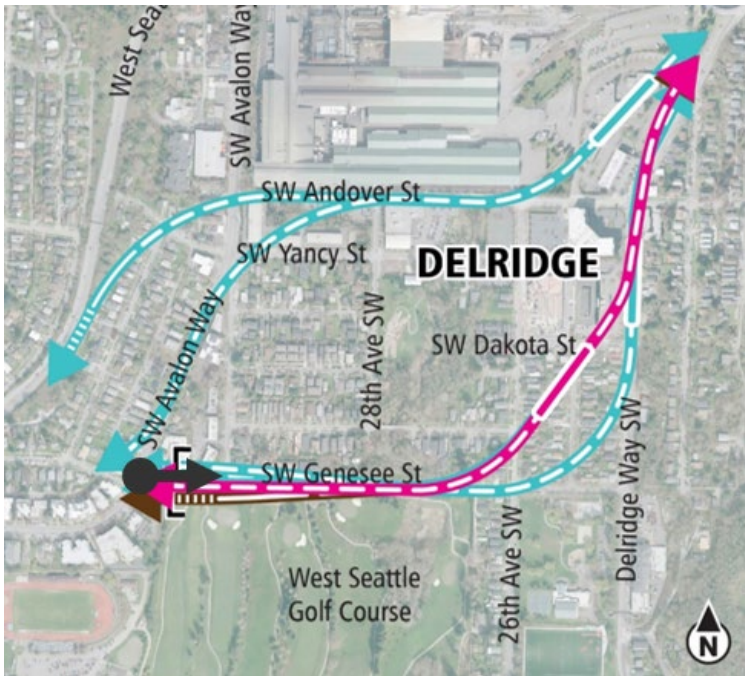
## Existing Condition



Viewpoint: Looking East along Southwest Genesee Street from Southwest Avalon Way



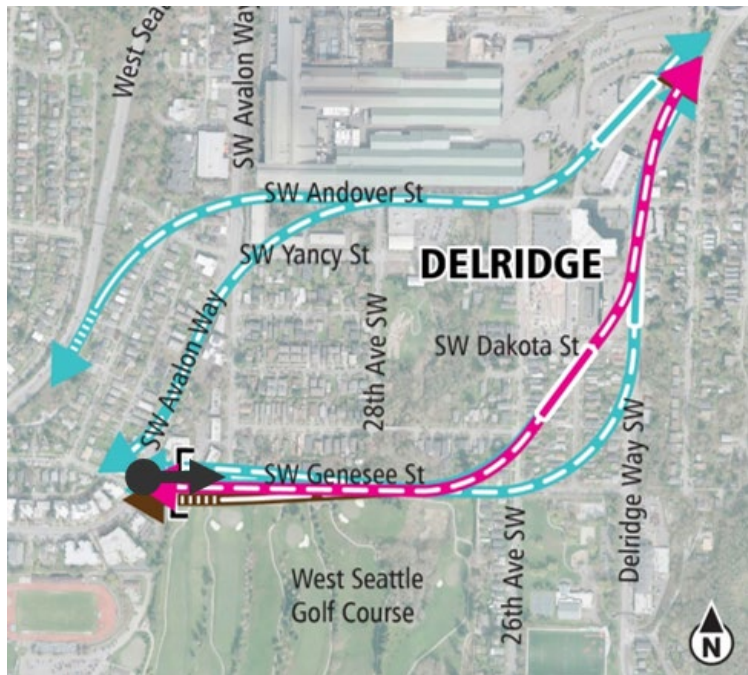
## Dakota Street Station Alternative



Viewpoint: Looking East along Southwest Genesee Street from Southwest Avalon Way



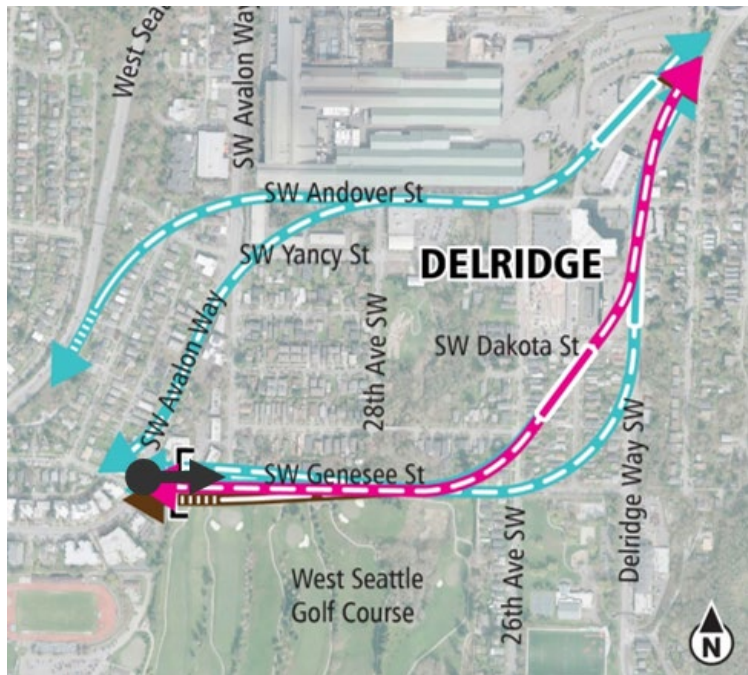
## Dakota Street Station North Alignment Alternative



Viewpoint: Looking East along Southwest  
Genesee Street from Southwest Avalon Way



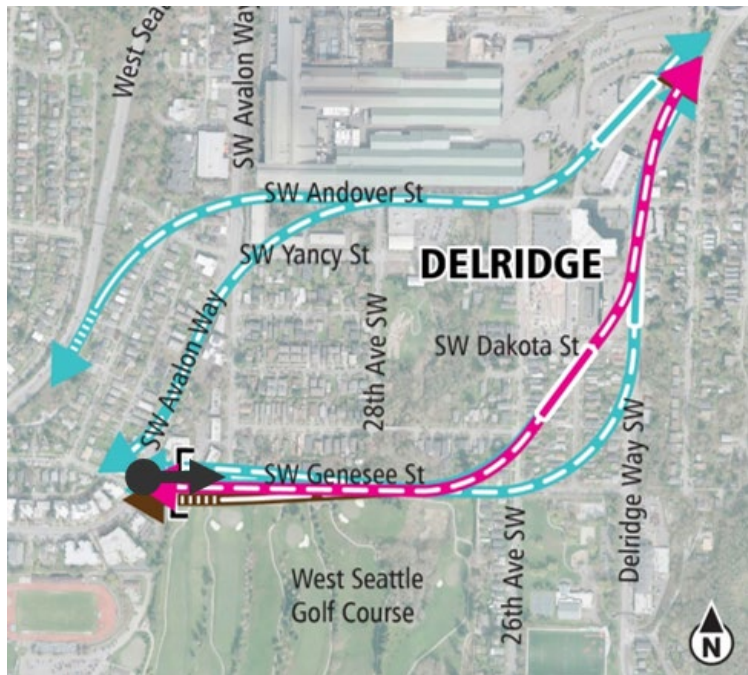
## Dakota Street Station Lower Height Alternative



Viewpoint: Looking East along Southwest Genesee Street from Southwest Avalon Way



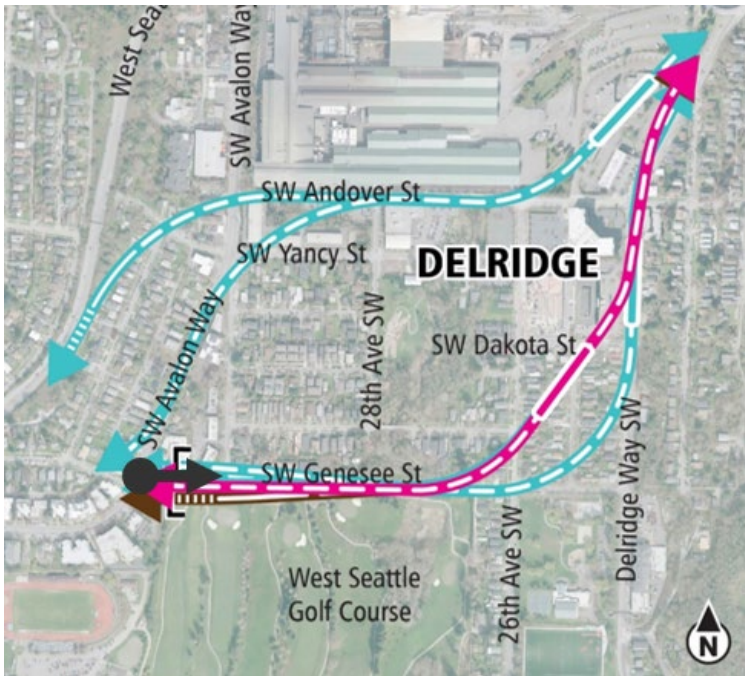
## Dakota Street Station Lower Height North Alignment Alternative



Viewpoint: Looking East along Southwest Genesee Street from Southwest Avalon Way



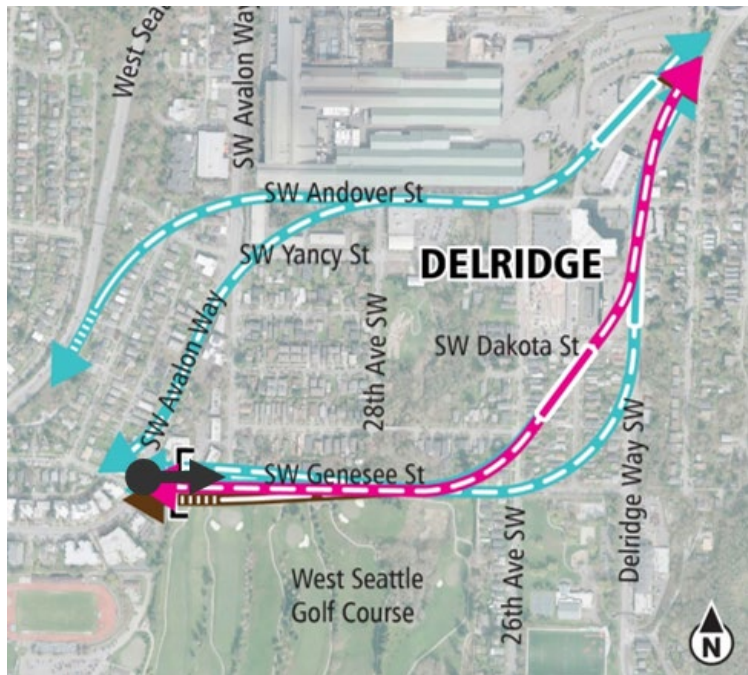
## Delridge Way Station Alternative



Viewpoint: Looking East along Southwest Genesee Street from Southwest Avalon Way



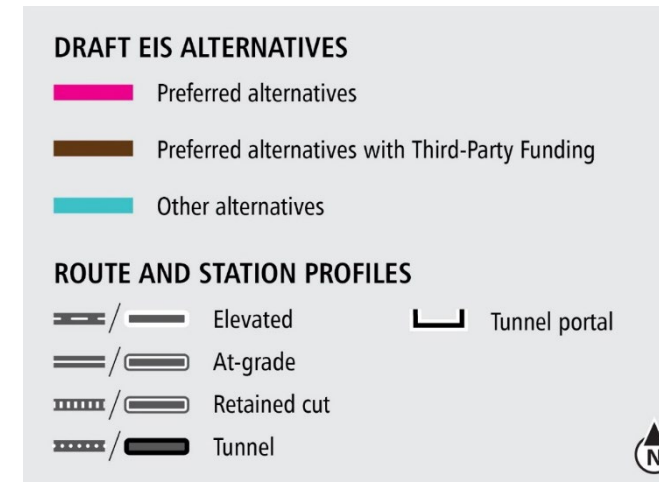
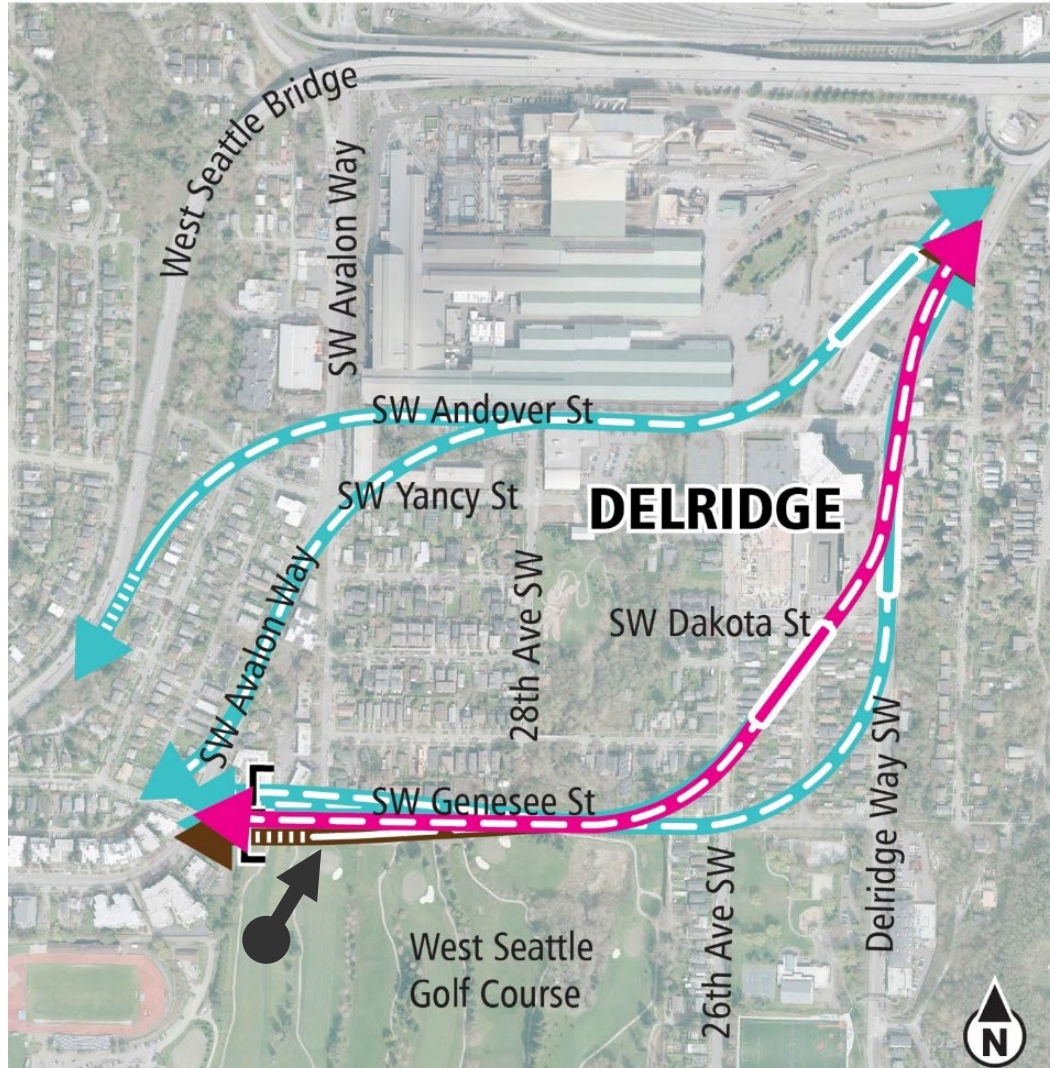
## Delridge Way Station Lower Height Alternative



Viewpoint: Looking East along Southwest Genesee Street from Southwest Avalon Way



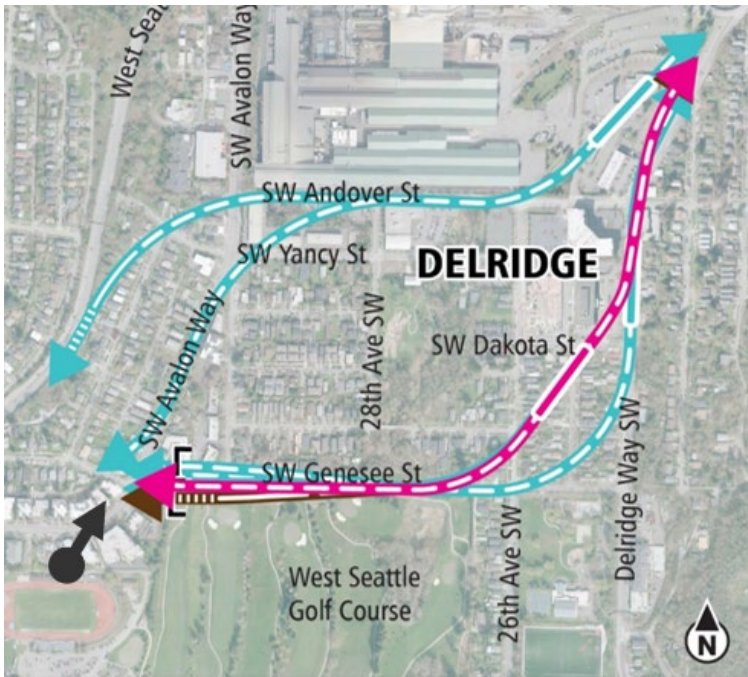
# Draft EIS alternatives Delridge



Viewpoint: Southwest Avalon Way Looking North at Intersection with Southwest Genesee Street



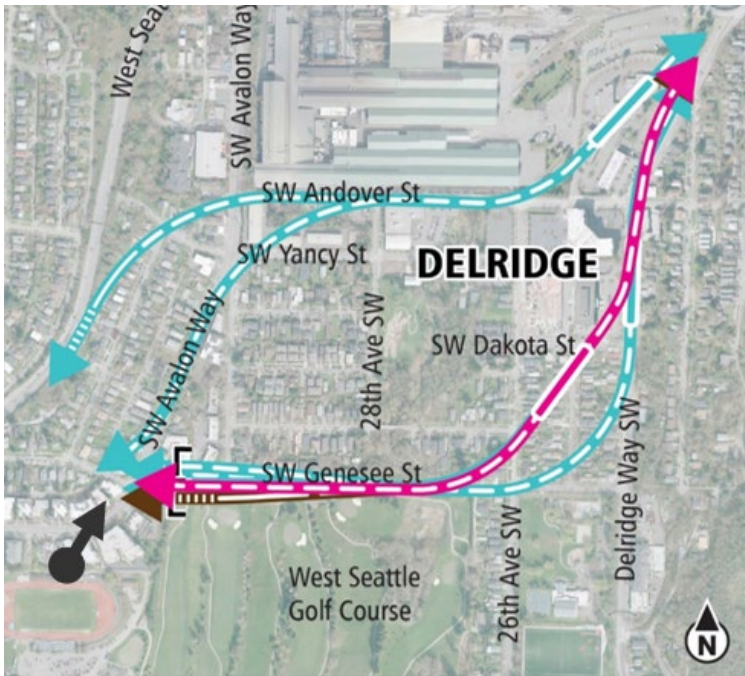
## Existing Condition



Viewpoint: Southwest Avalon Way Looking North at Intersection with Southwest Genesee Street



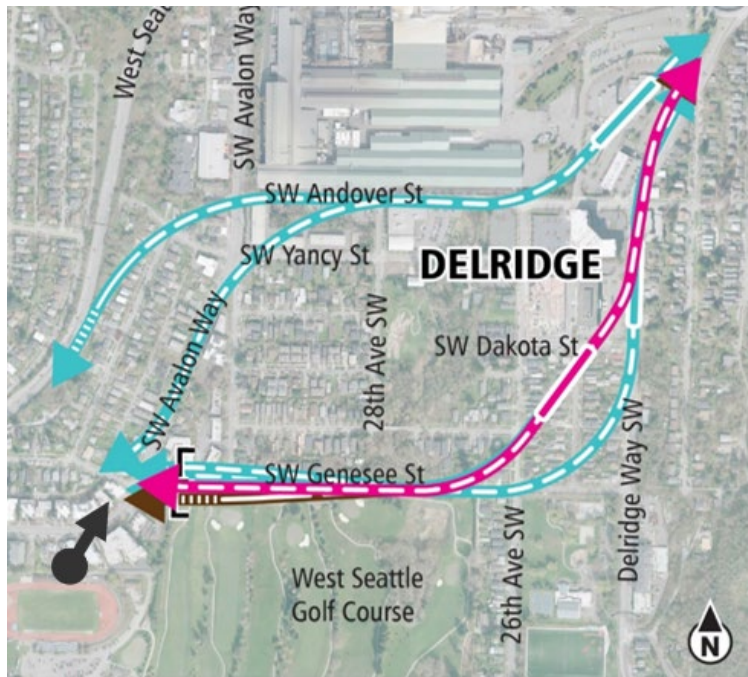
## Dakota Street Station Alternative



Viewpoint: Southwest Avalon Way Looking North at Intersection with Southwest Genesee Street



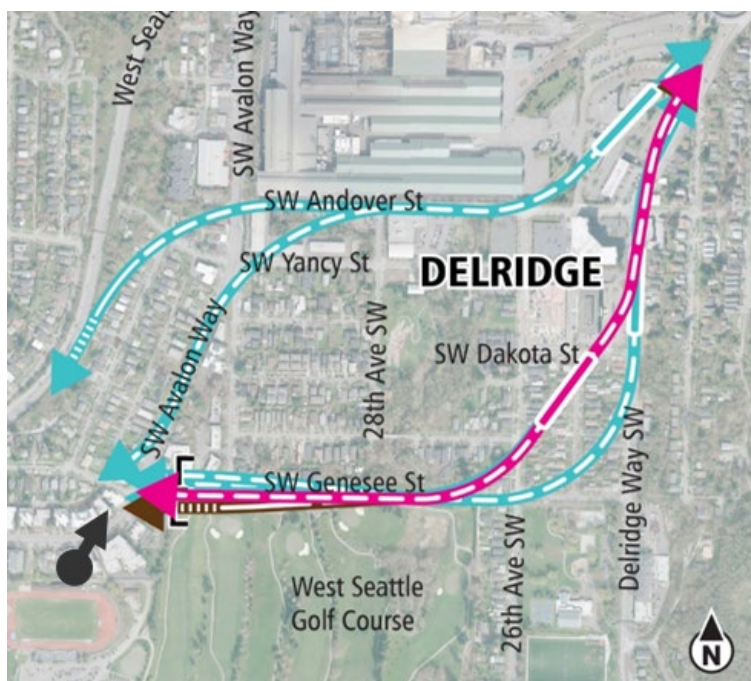
## Dakota Street Station North Alignment Alternative



Viewpoint: Southwest Avalon Way Looking North at  
Intersection with Southwest Genesee Street



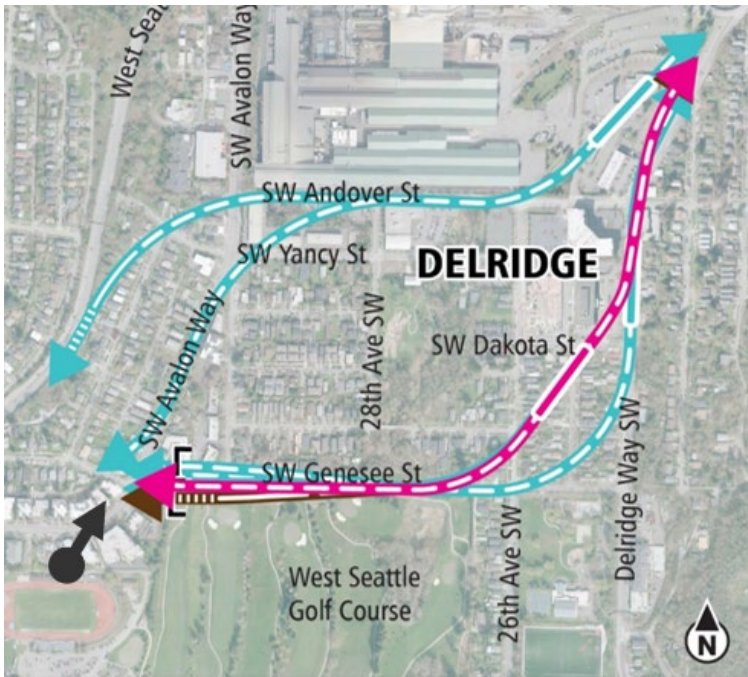
## Delridge Way Station Alternative



Viewpoint: Southwest Avalon Way Looking North at Intersection with Southwest Genesee Street



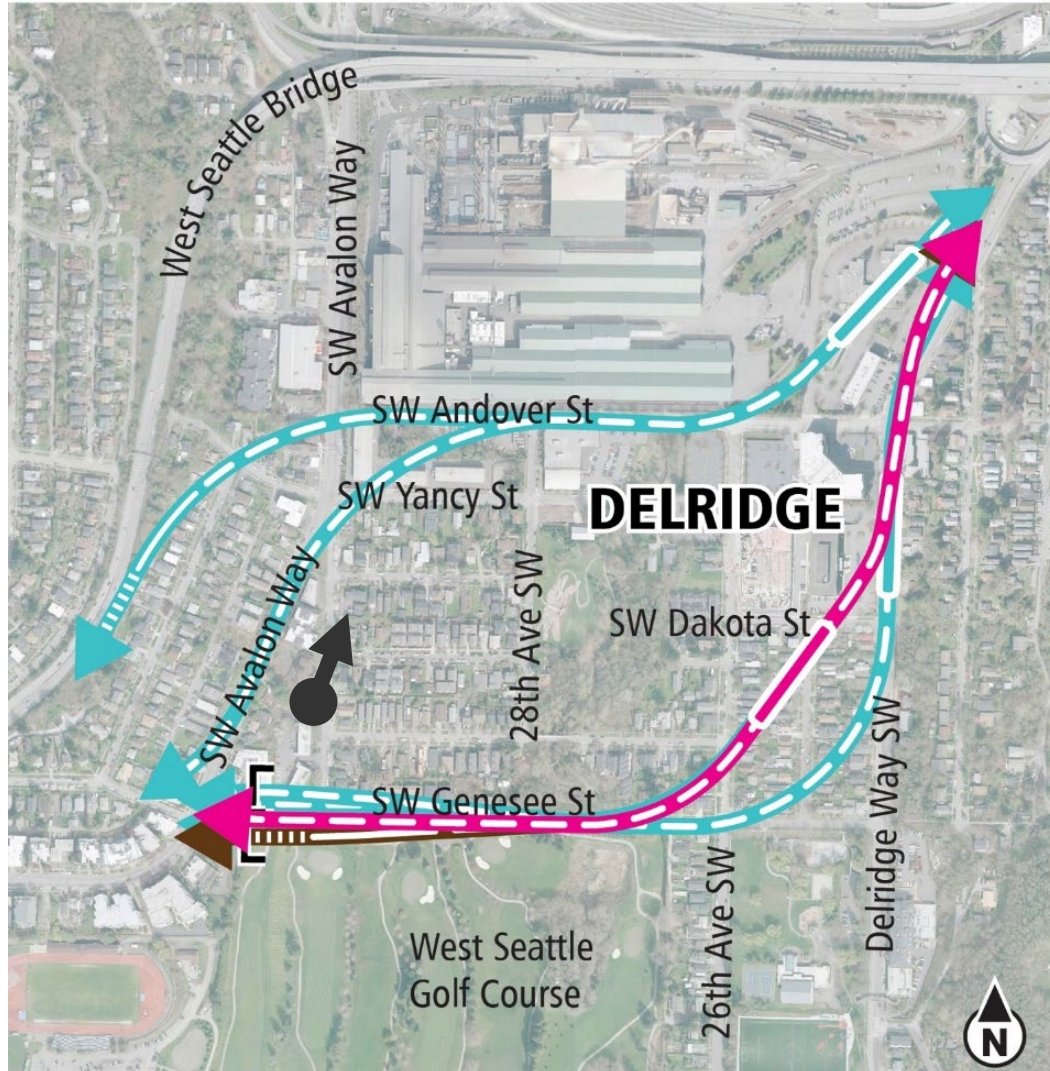
## Andover Street Station Alternative



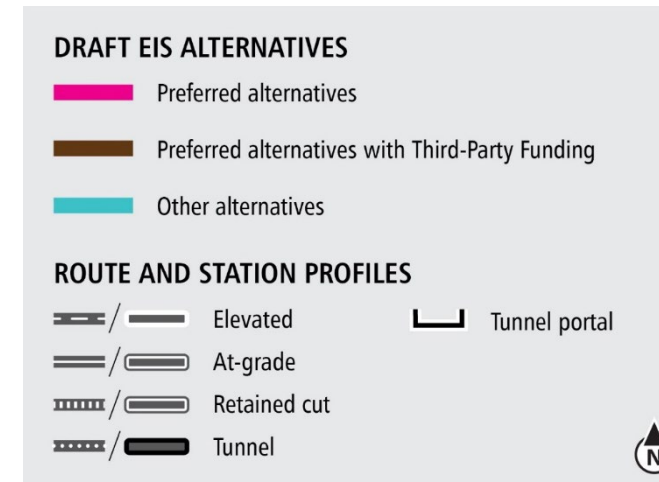
Viewpoint: Southwest Avalon Way Looking North at  
Intersection with Southwest Genesee Street



# Draft EIS alternatives Delridge

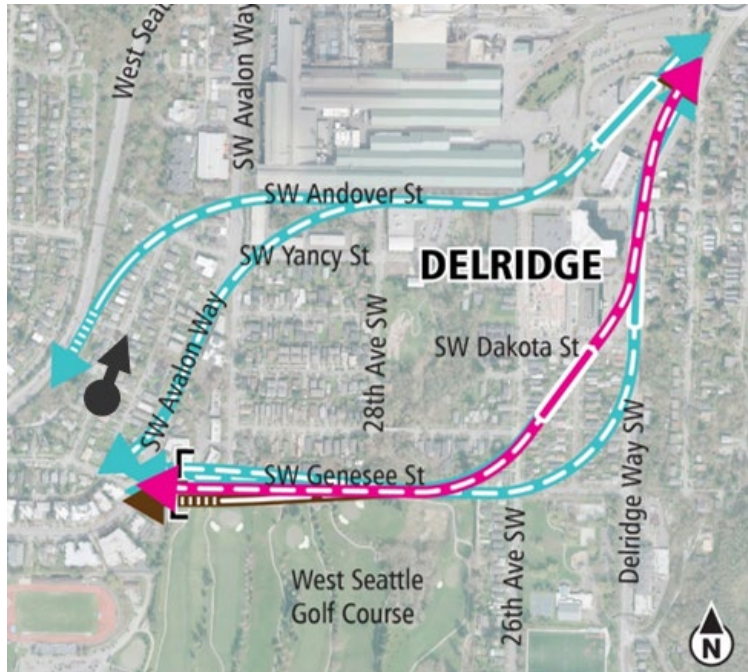


Viewpoint: Looking north Along 32nd Avenue SW





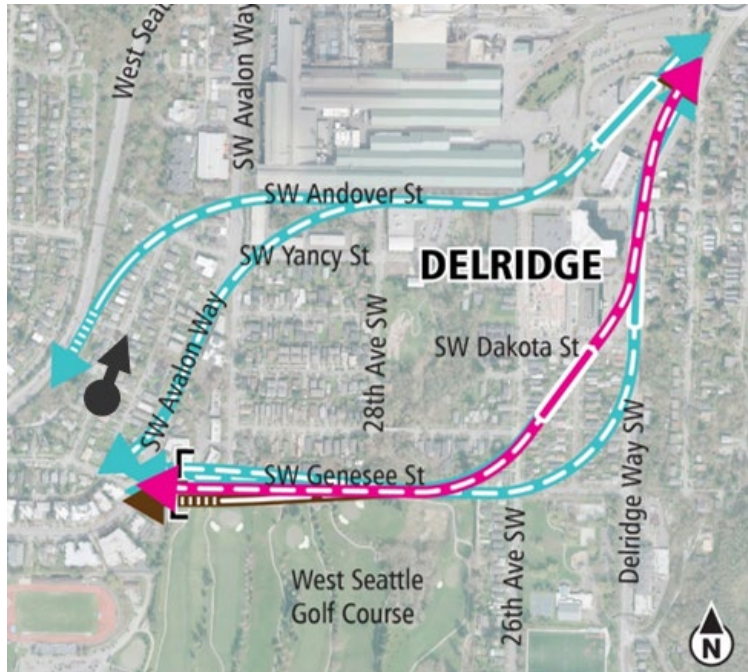
## Existing Condition



Viewpoint: Looking north Along 32nd Avenue SW



## Andover Street Station Lower Height Alternative



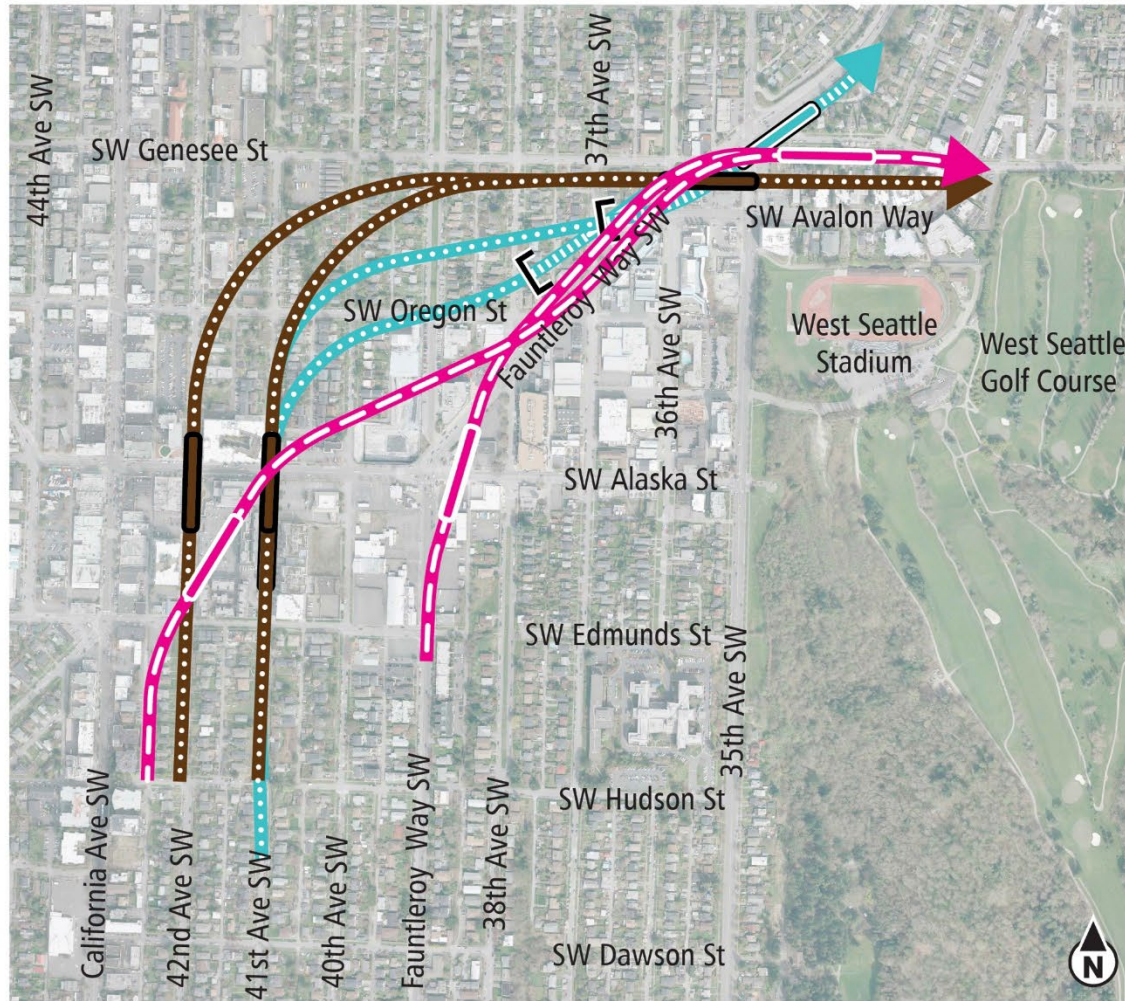
Viewpoint: Looking north Along 32nd Avenue SW




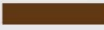

# ***West Seattle Junction segment***






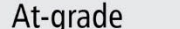

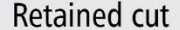


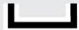
# Draft EIS alternatives Junction



## DRAFT EIS ALTERNATIVES

-  Preferred alternatives
-  Preferred alternatives with Third-Party Funding
-  Other alternatives

## ROUTE AND STATION PROFILES

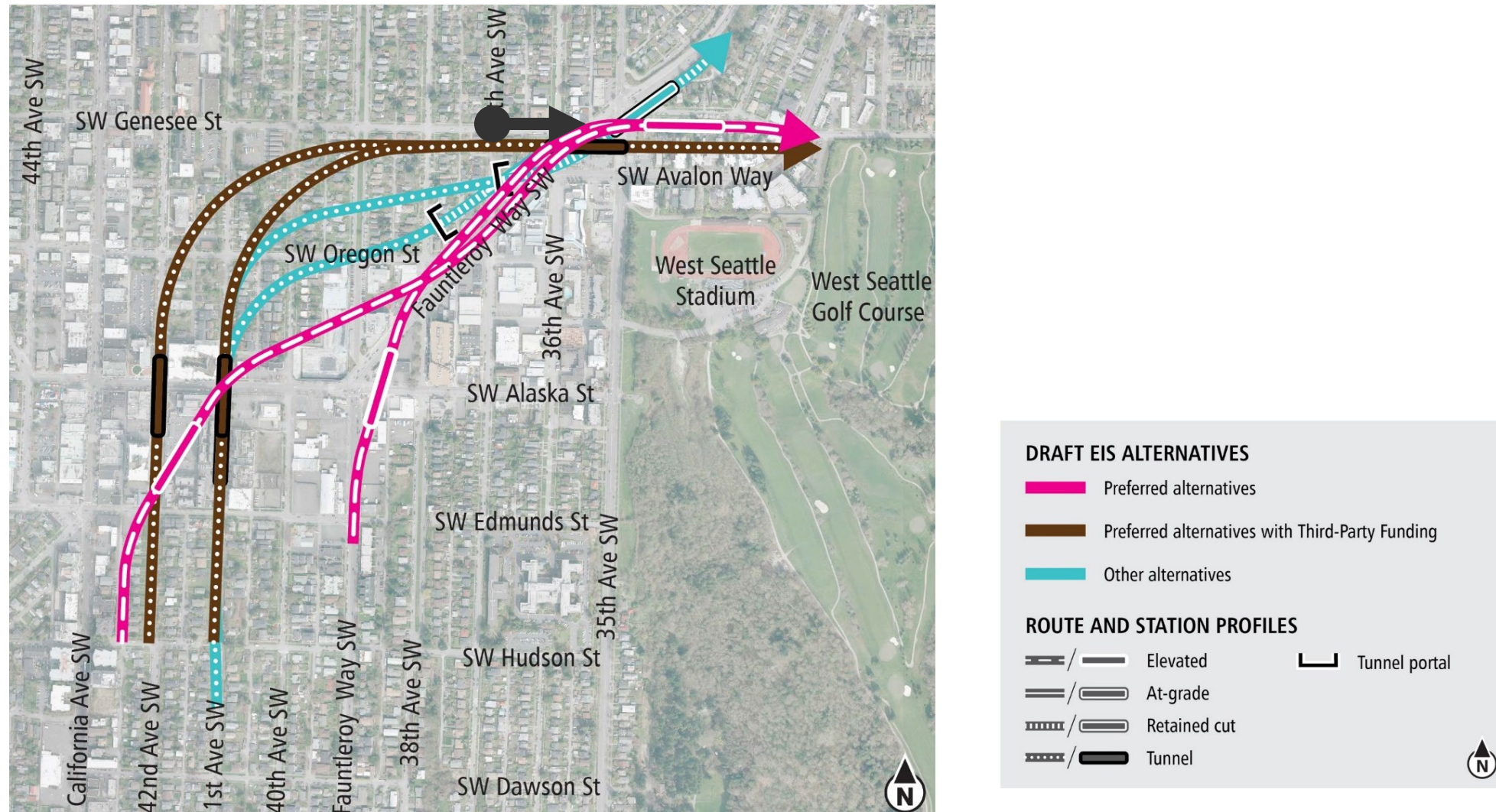
-  /  Elevated
  -  /  At-grade
  -  /  Retained cut
  -  /  Tunnel
-  Tunnel portal



Diagrams are not to scale. All measurements are approximate and are for discussion purposes only.



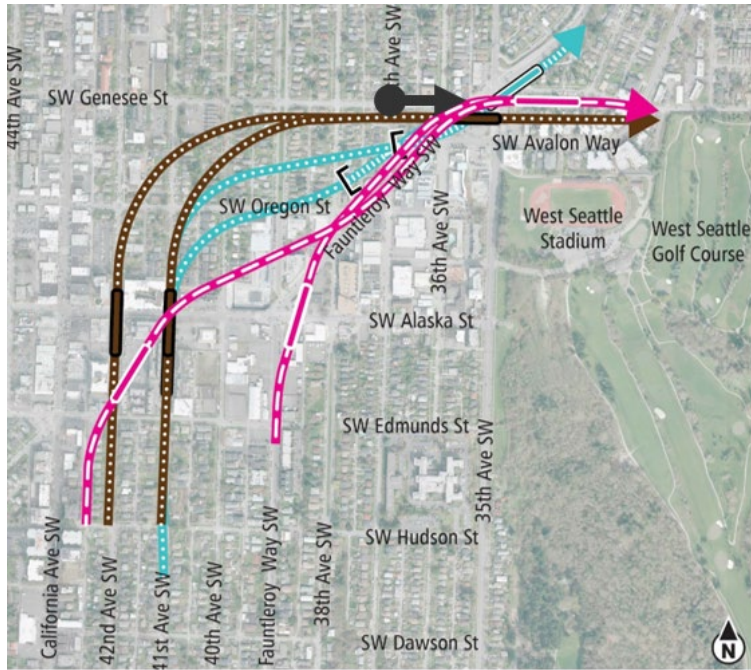
# Draft EIS alternatives Junction



Viewpoint: Genesee Street Looking East toward Southwest Avalon Way



## Existing Condition



Viewpoint: Genesee Street Looking East toward Southwest Avalon Way



**Elevated 41st/42nd  
Alternative**

**Elevated Fauntleroy Way  
Station Alternative**

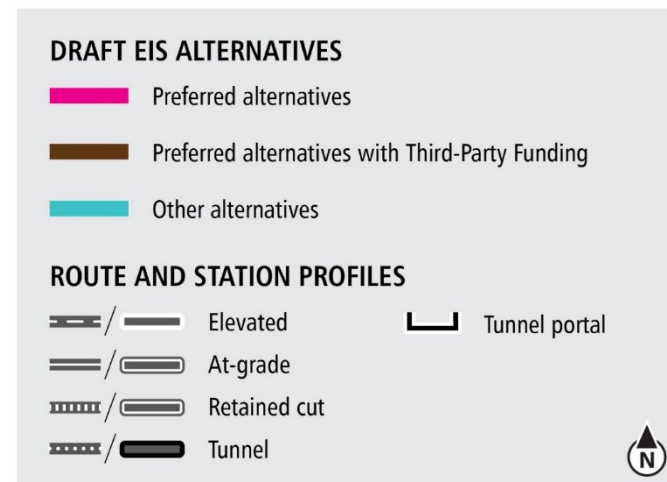
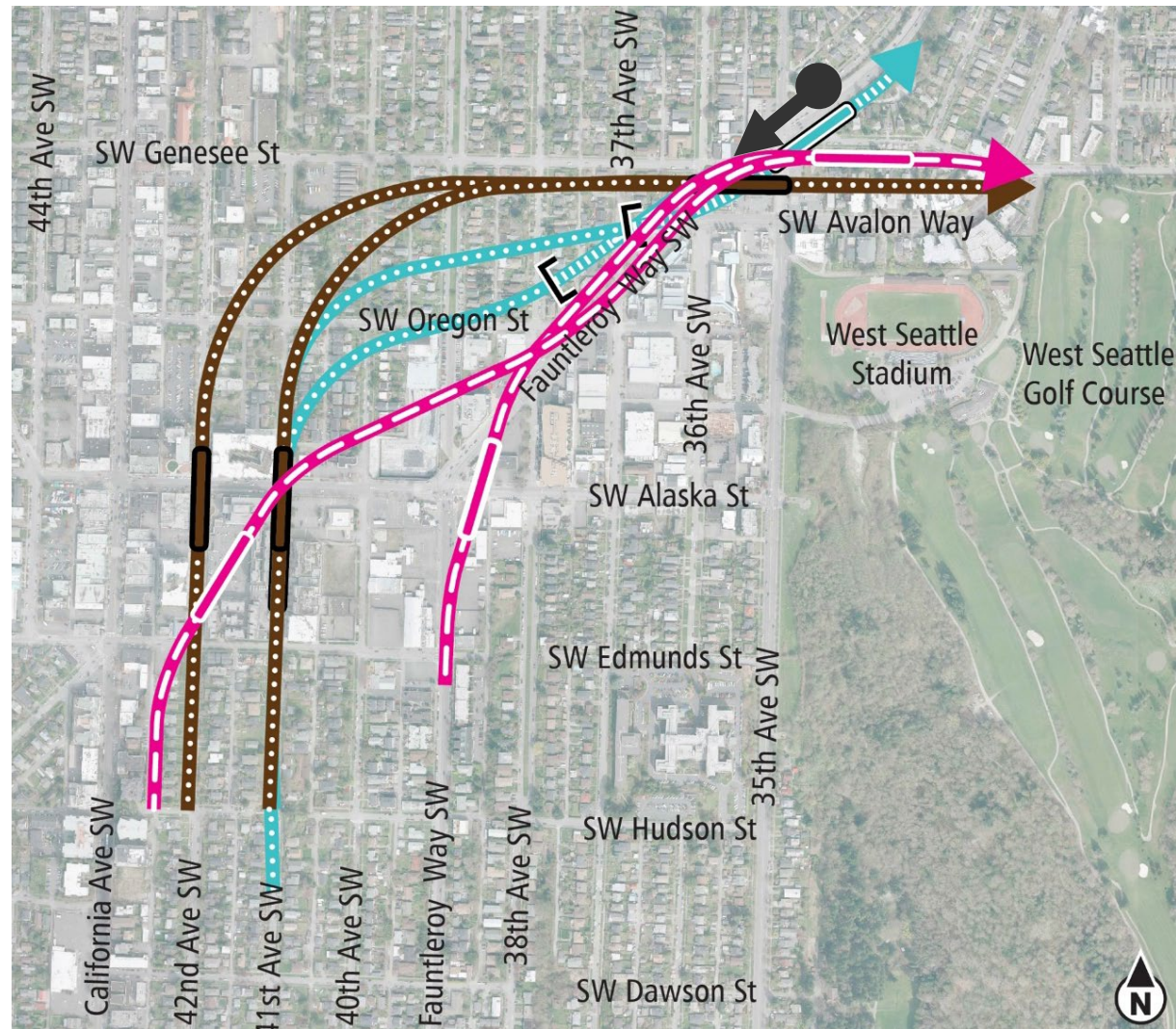
**Short Tunnel 41st Avenue  
Station Alternative**



Viewpoint: Genesee Street Looking East toward Southwest Avalon Way



# Draft EIS alternatives Junction



Viewpoint: Looking Southwest along Fauntleroy Way Southwest from 35th Avenue Southwest



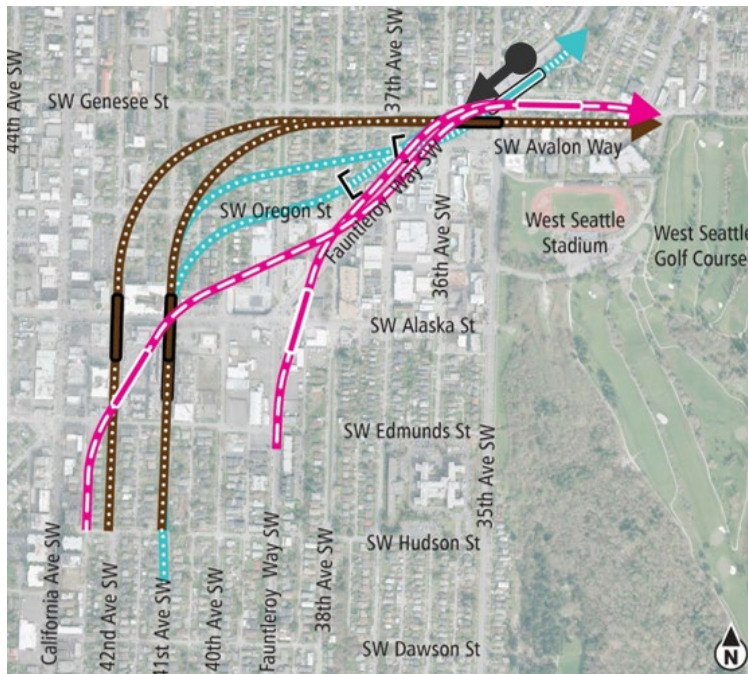
## Existing Condition



Viewpoint: Looking Southwest along Fauntleroy Way Southwest from 35th Avenue Southwest



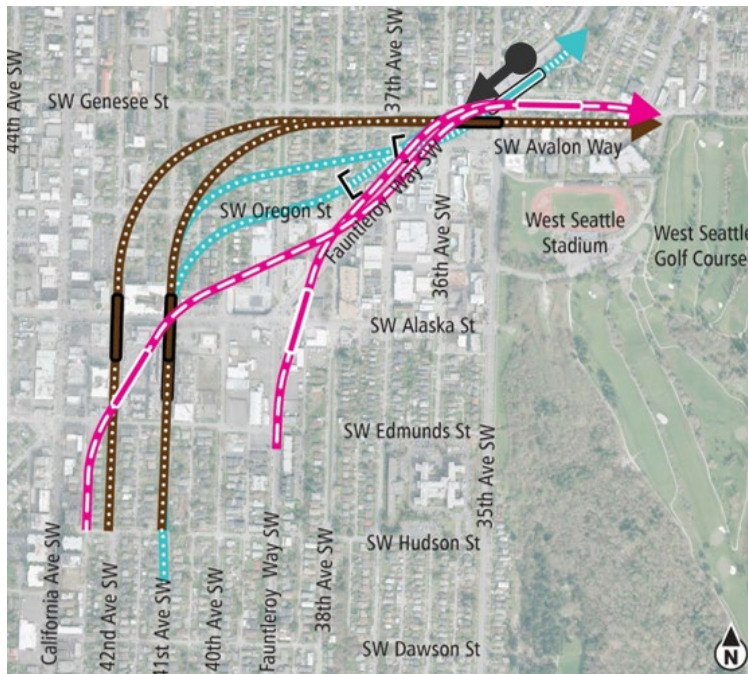
## Elevated 41st/42nd Alternative



Viewpoint: Looking Southwest along Fauntleroy Way Southwest from 35th Avenue Southwest



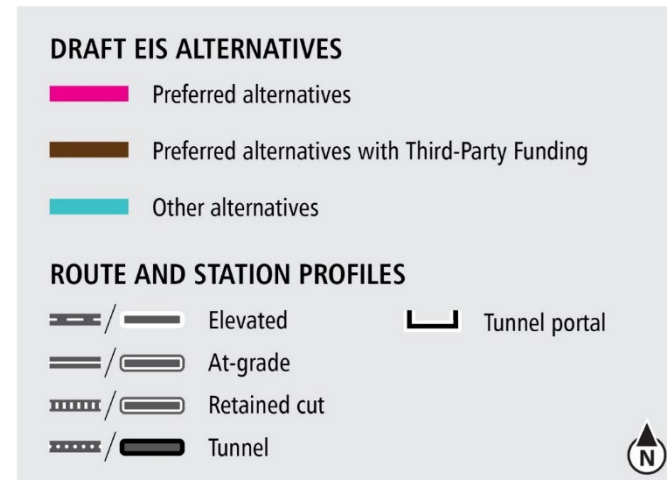
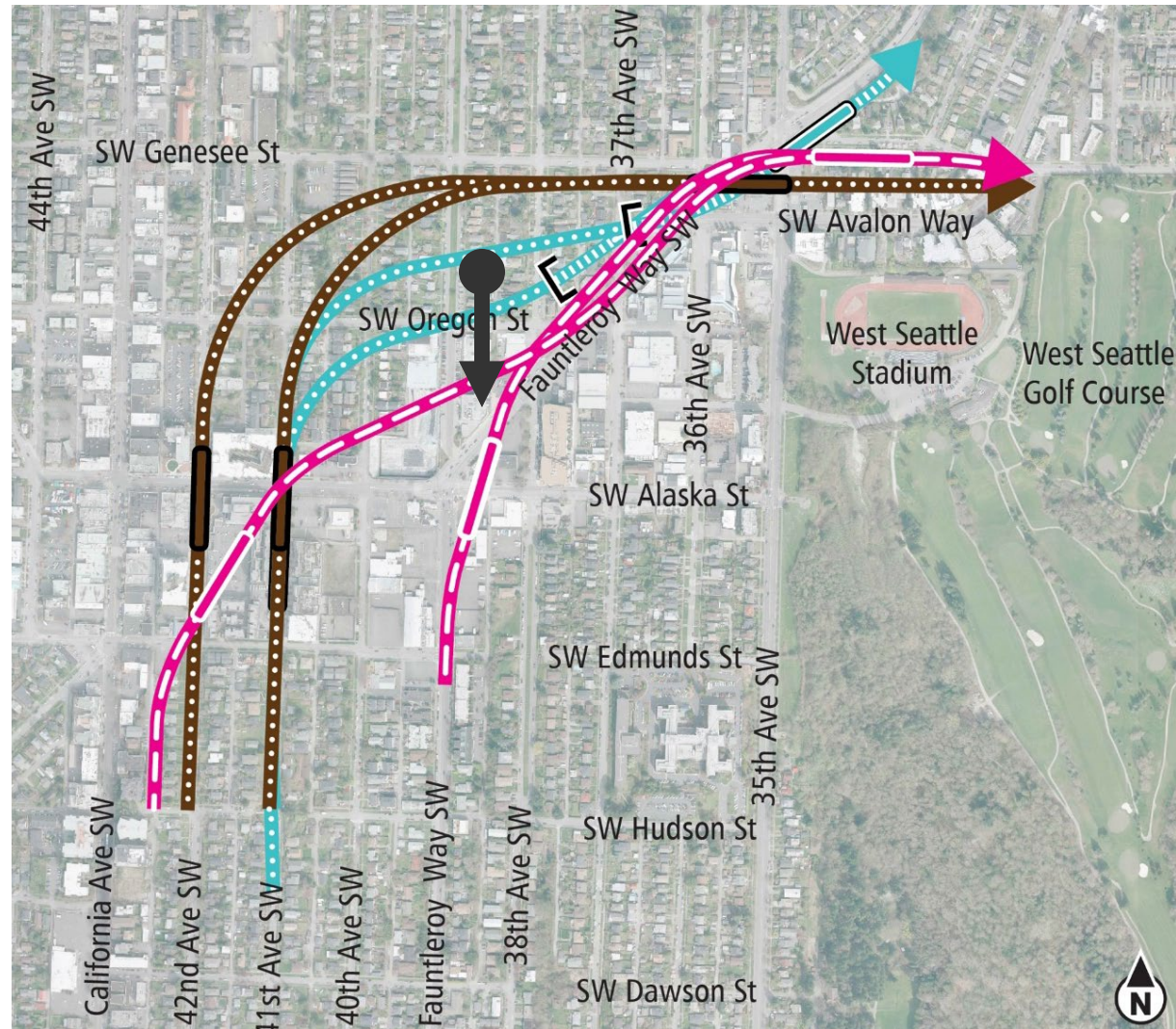
## Elevated Fauntleroy Way Station Alternative



Viewpoint: Looking Southwest along Fauntleroy Way Southwest from 35th Avenue Southwest



# Draft EIS alternatives Junction



Viewpoint: Looking South along 39th Avenue Southwest toward Fauntleroy Way Southwest



## Existing Condition



Viewpoint: Looking South along 39th Avenue Southwest toward Fauntleroy Way Southwest



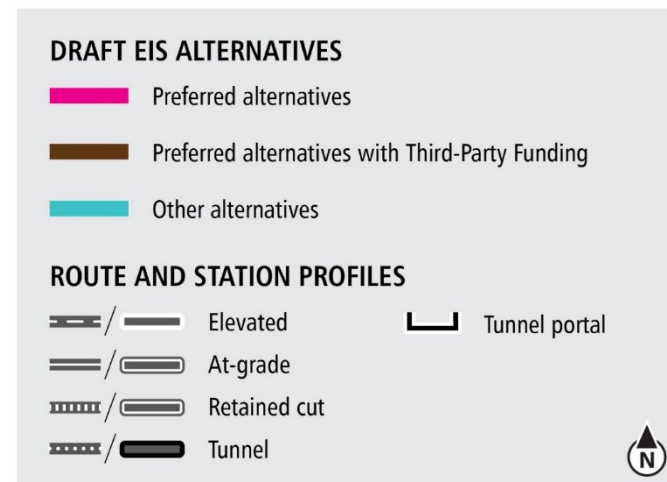
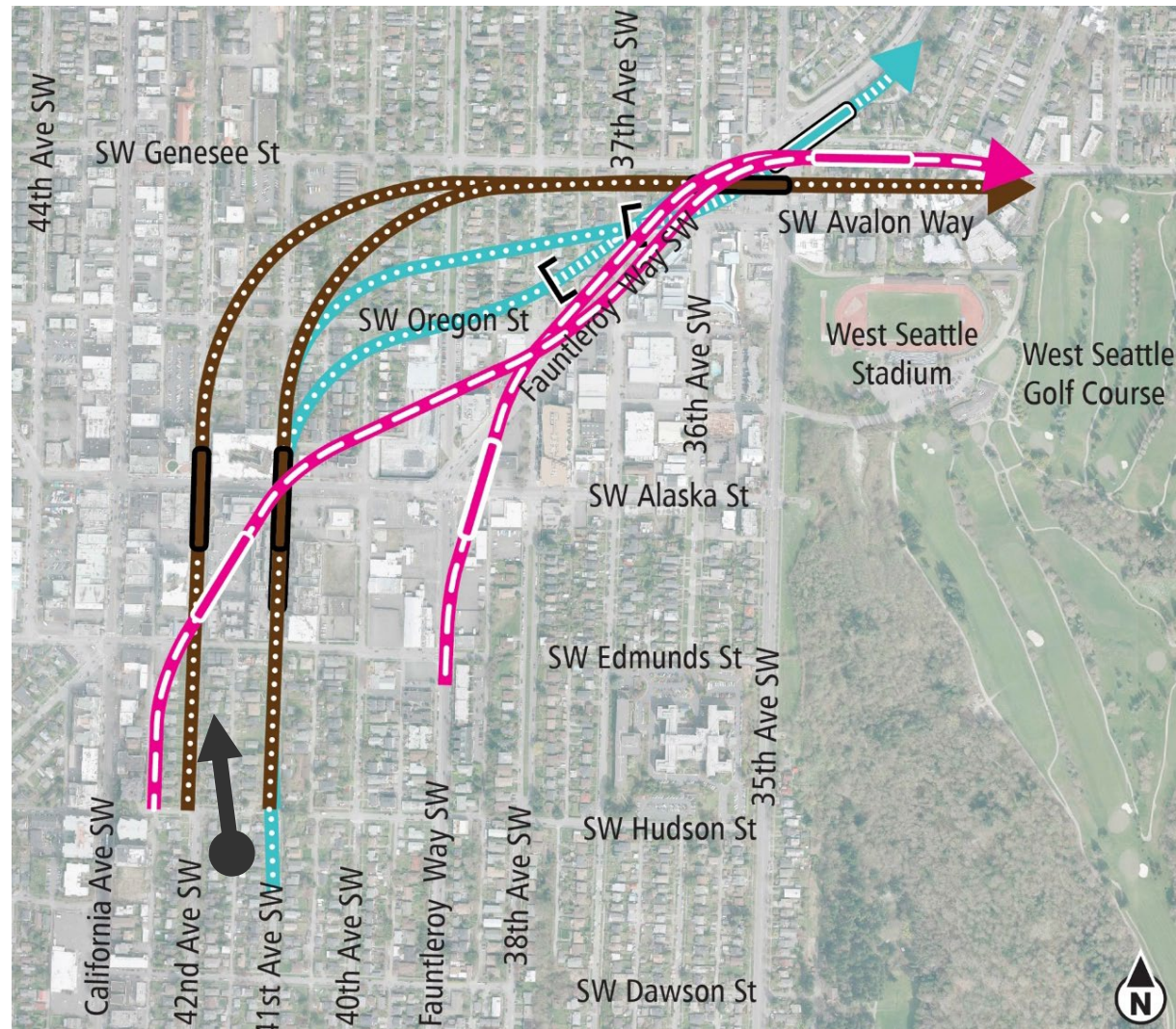
## Elevated Fauntleroy Way Station Alternative



Viewpoint: Looking South along 39th Avenue Southwest toward Fauntleroy Way Southwest



# Draft EIS alternatives Junction



Viewpoint: Looking North along 42nd Avenue Southwest near Southwest Hudson Street



## Existing Condition



Viewpoint: Looking North along 42nd Avenue Southwest near Southwest Hudson Street



## Elevated 41st/42nd Alternative



Viewpoint: Looking North along 42nd Avenue  
Southwest near Southwest Hudson Street



 *wsblink@soundtransit.org*  
*(206) 903-7229*



*soundtransit.org/wsblink*

